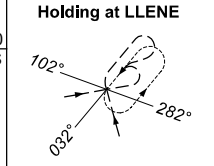
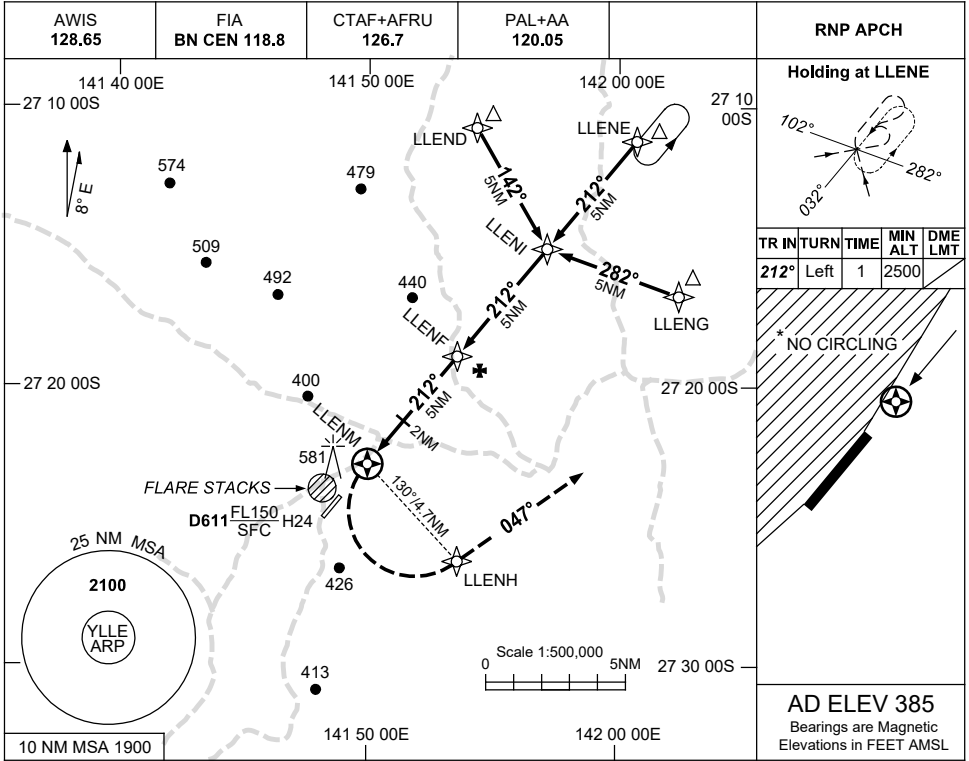


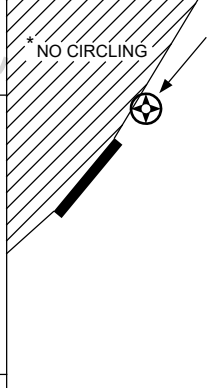
USE QNH

RNP RWY 21
BALLERA, QLD (YLLE)

30 NOV 2023

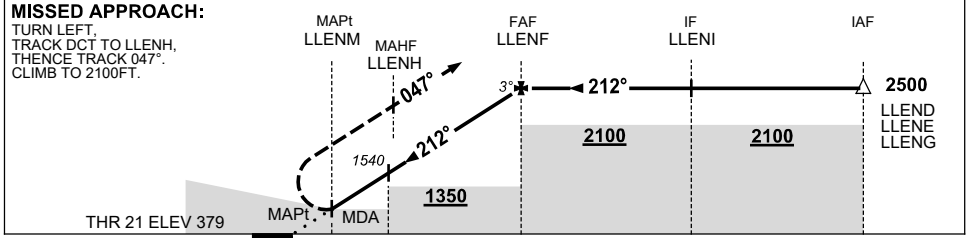


TR	IN	TURN	TIME	MIN ALT	DME LMT
212°	Left	1		2500	



AD ELEV 385
Bearings are Magnetic
Elevations in FEET AMSL

NM TO NEXT WPT	LLENM	0.1	1	2	3	4	LLENF				
ALT (3° APCH PATH)		940	1220	1540	1860	2180	2500				



NM TO LLENM: 1.5, 0, 2, 5, 10, 15

NOTES

CATEGORY	A	B	C	D
LNAV	940 (555-3.1)			NOT APPLICABLE
CIRCLING *	990 (605-2.4)		1090 (705-4.0)	
ALTERNATE	(1105-4.4)		(1205-6.0)	

- MAX IAS: INITIAL : 210KT. MAP TURN: 200KT.
- NO CIRCLING WEST OF RWY 03/21.

Changes: UNICOM REMOVED, Editorial.

LLEGN02-177

