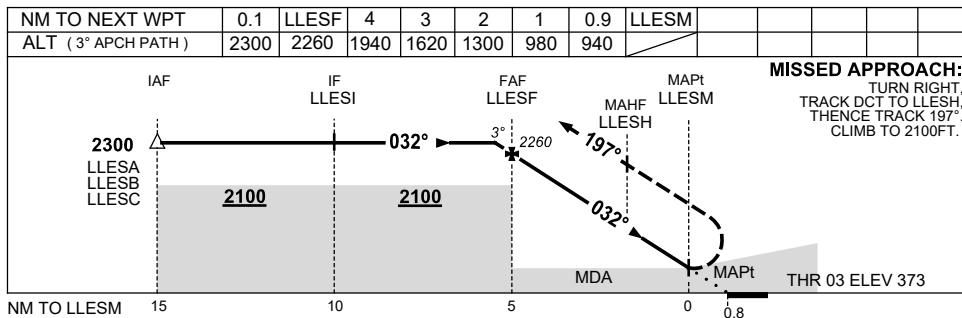
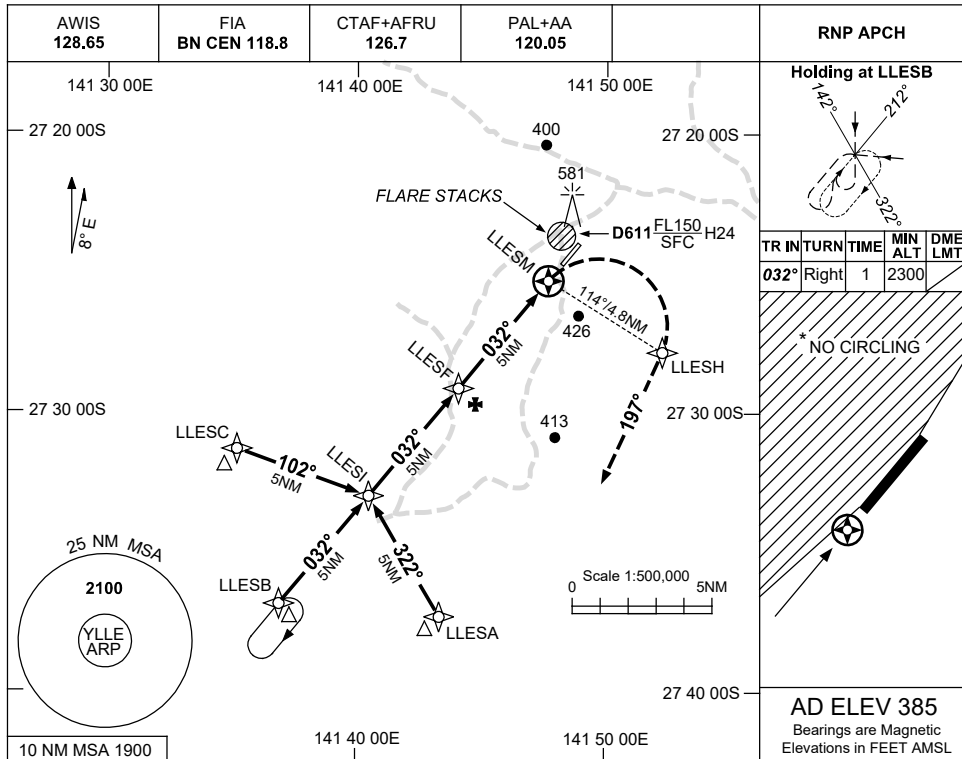


USE QNH

RNP RWY 03
BALLERA, QLD (YLLE)

30 NOV 2023



NOTES

CATEGORY	A	B	C	D
LNAV	940 (567-3.2)			NOT APPLICABLE
CIRCLING *	990 (605-2.4)		1090 (705-4.0)	
ALTERNATE	(1105-4.4)		(1205-6.0)	

- MAX IAS:
INITIAL : 210KT,
MAP TURN: 200KT.
- NO CIRCLING WEST OF RWY 03/21.

Changes: UNICOM REMOVED, Editorial.

LLEGN01-177

