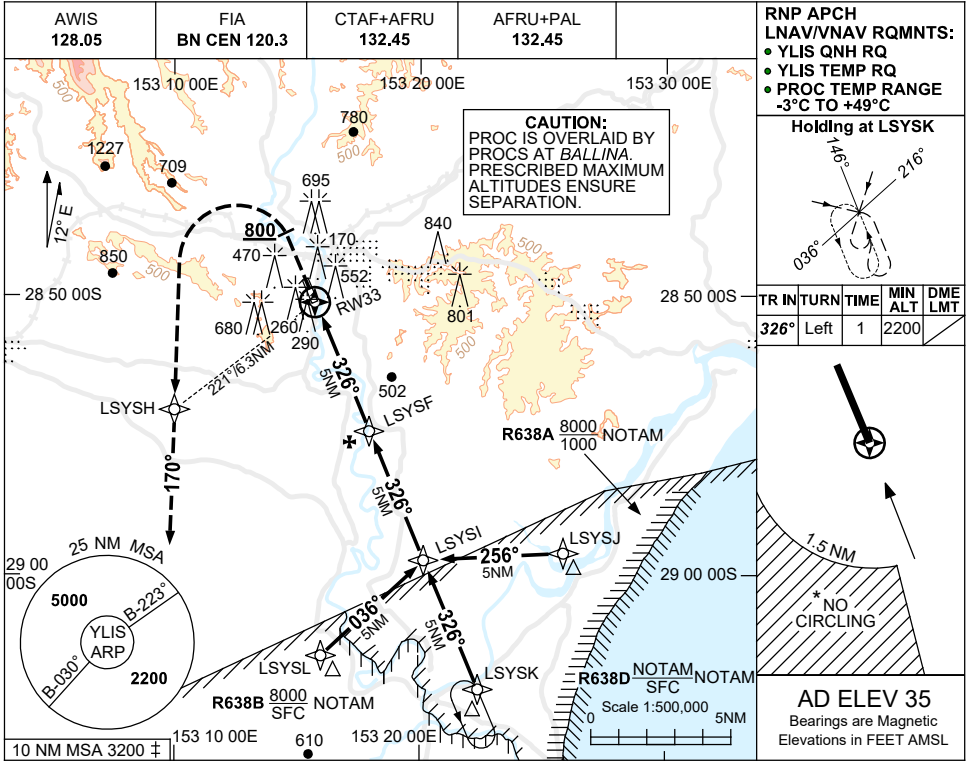


USE QNH

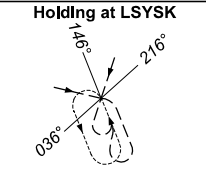
RNP RWY 33

7 SEP 2023

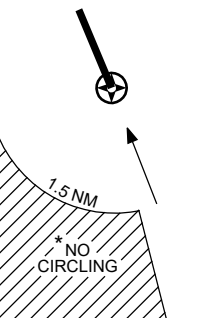
LISMORE, NSW (YLIS)



RNP APCH
LNAV/VNAV RQMNTS:
● YLIS QNH RQ
● YLIS TEMP RQ
● PROC TEMP RANGE
-3°C TO +49°C

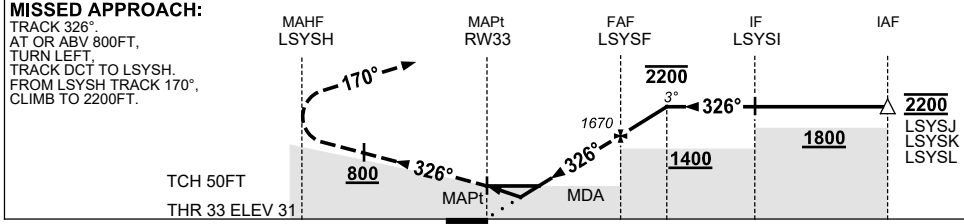


TR IN	TURN	TIME	MIN ALT	DME LMT
326°	Left	1	2200	



AD ELEV 35
Bearings are Magnetic
Elevations in FEET AMSL

NM TO NEXT WPT	RW33	1.6	2.2	3	4	LSYSF	1	1.7			
ALT (3° APCH PATH)		590	790	1040	1350	1670	1990	2200			



NM TO RW33

- NOTES**
1. MAX IAS:
INITIAL : 210KT.
MAP TURN: 190KT.
 - *2. NO CIRCLING WEST OF RWY 15/33 BEYOND 1.5NM.
 - ‡ 3. 10 NM MSA IS A COMBINED AREA FOR YLIS, YBNA.
 4. PROCEDURE NOT AVBL WHEN R638 ACTIVE.
 5. COLOUR: SEE SPEC NOTICES.

CATEGORY	A	B	C	D
LNAV/VNAV		590 (559-3.2)		NOT APPLICABLE
LNAV		790 (755-4.3)		
CIRCLING*	1060 (1025-2.4)		1310 (1275-4.0)	
ALTERNATE	(1525-4.4)		(1775-6.0)	

Changes: MODEL ACFT SYMBOL REMOVED. LISGN02-176