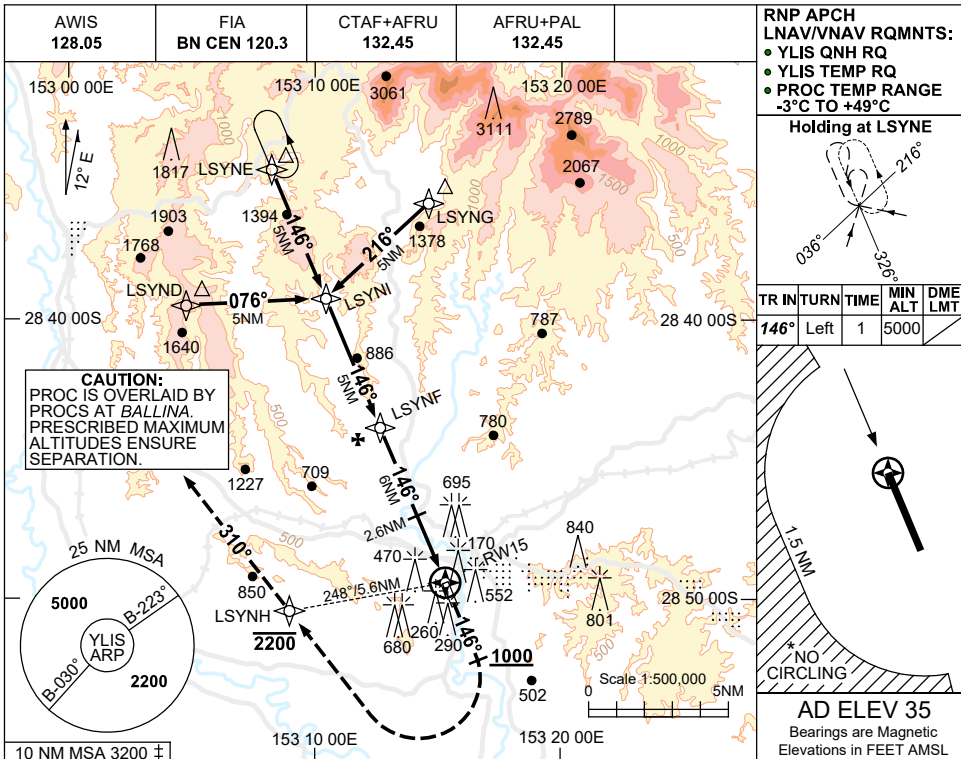


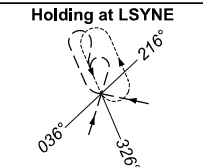
USE QNH

RNP RWY 15  
LISMORE, NSW (YLIS)

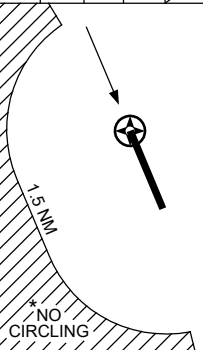
7 SEP 2023



RNP APCH  
LNAV/VNAV RQMNTS:  
• YLIS QNH RQ  
• YLIS TEMP RQ  
• PROC TEMP RANGE  
-3°C TO +49°C

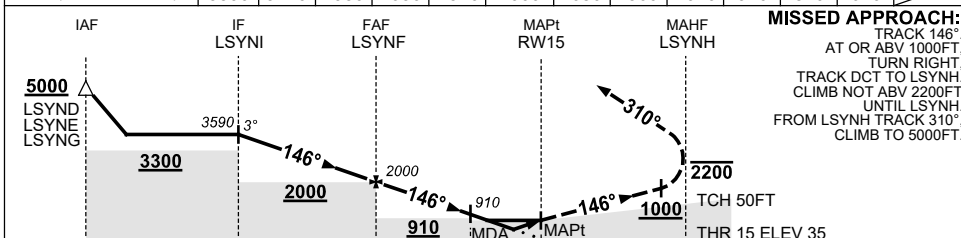


TR IN	TURN	TIME	MIN ALT	DME LMT
146°	Left	1	5000	



AD ELEV 35  
Bearings are Magnetic  
Elevations in FEET AMSL

NM TO NEXT WPT	LSYNI	4	3	2	1	LSYNF	5	4	3	2.6	2.3	1.7	RW15
ALT (3° APCH PATH)	3590	3270	2950	2630	2310	2000	1680	1360	1040	910	810	620	



**MISSED APPROACH:**  
TRACK 146°  
AT OR ABV 1000FT,  
TURN RIGHT,  
TRACK DCT TO LSYNH.  
CLIMB NOT ABV 2200FT  
UNTIL LSYNH.  
FROM LSYNH TRACK 310°,  
CLIMB TO 5000FT.

**NOTES**

- MAX IAS:  
INITIAL : 210KT.  
MAP TURN: 190KT.
- NO CIRCLING WEST OF RWY 15/33 BEYOND 1.5NM.
- 10 NM MSA IS A COMBINED AREA FOR YLIS, YBNA.
- COLOUR: SEE SPEC NOTICES.

CATEGORY	A	B	C	D
LNAV/VNAV		620 (585-3.3)		NOT APPLICABLE
LNAV		810 (775-4.4)		
CIRCLING *	1060 (1025-2.4)		1310(1275-4.0)	
ALTERNATE		(1525-4.4)	(1775-6.0)	

Changes: MODEL ACFT SYMBOL REMOVED.

LISGN01-176