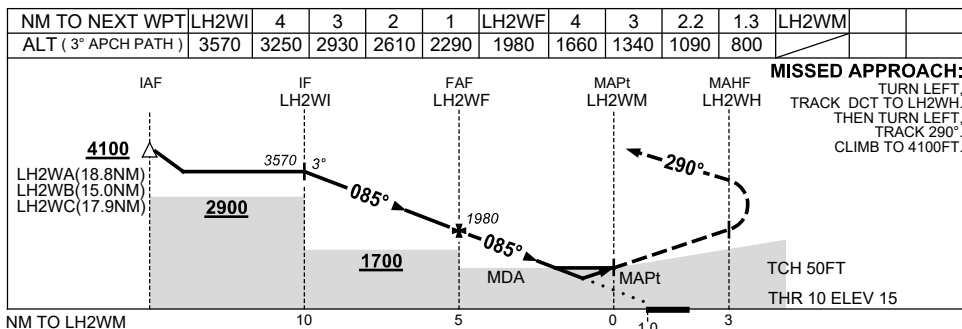
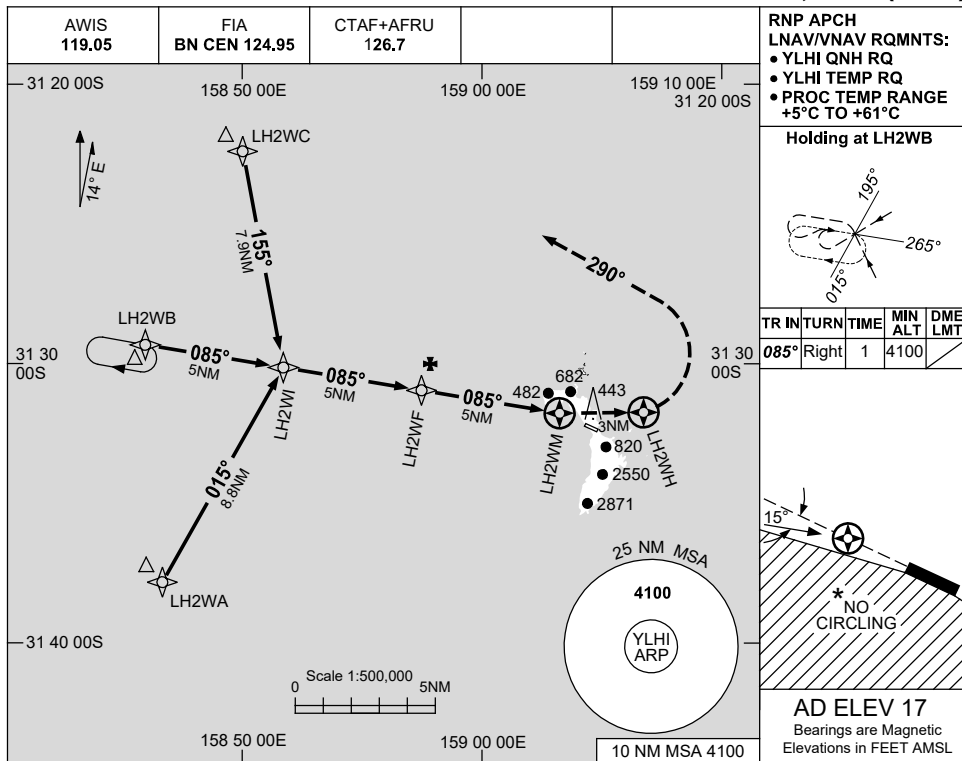


USE QNH

RNP RWY 10

16 JUN 2022

LORD HOWE ISLAND, NSW (YLHI)



| CATEGORY   | A               | B | C               | D              |  |
|------------|-----------------|---|-----------------|----------------|--|
| LNAV/VNAV  | 800 (785-4.5)   |   |                 | NOT APPLICABLE |  |
| LNAV       | 1090 (1073-5.0) |   |                 |                |  |
| CIRCLING * | 1340 (1323-2.4) |   | 1440 (1423-4.0) |                |  |
| ALTERNATE  | (1823-4.4)      |   | (1923-6.0)      |                |  |

1. MAX IAS: INITIAL : 210KT.  
\* 2. NO CIRCLING STH OF RWY 10/28.

Changes: MINIMA, WPT NAMING CONVENTION, Editorial.

LHIGN01-171