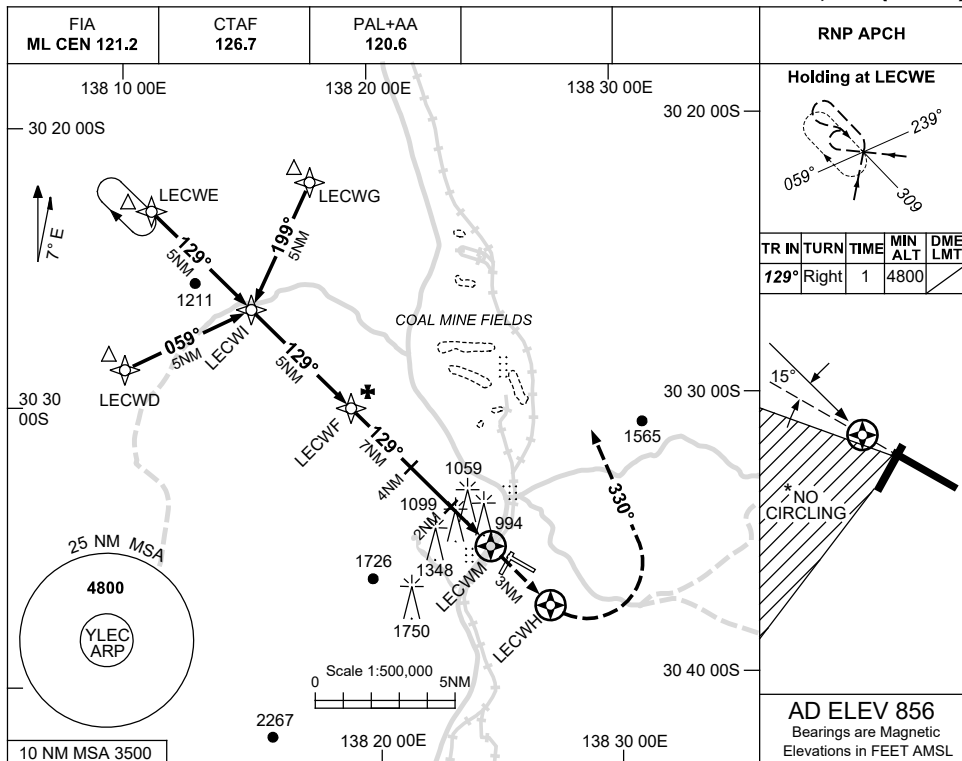


USE QNH

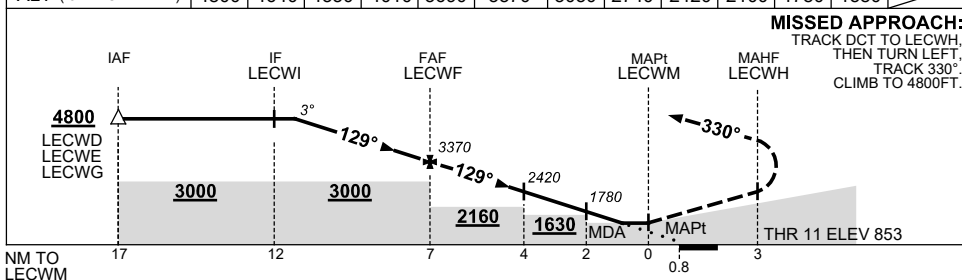
RNP RWY 11

1 DEC 2022

LEIGH CREEK, SA (YLEC)



NM TO NEXT WPT	4.5	4	3	2	1	LECWF	6	5	4	3	2	1.4	LECWM
ALT (3° APCH PATH)	4800	4640	4330	4010	3690	3370	3050	2740	2420	2100	1780	1580	



NOTES

CATEGORY	A	B	C	D
LNAV	1580 (724-4.1)			NOT APPLICABLE
CIRCLING *	1760 (904-2.4)		1930 (1074-4.0)	
ALTERNATE	(1404-4.4)		(1574-6.0)	

1. MAX IAS:
INITIAL : 210KT.
- *2. NO CIRCLING IN
SECTOR SW OF RWYS
02/20 AND 11/29.
3. AWIS (PHONE)
08 8150 3807

Changes: CHART TITLE, PBN SPECIFICATION BOX.

LECGN01-173