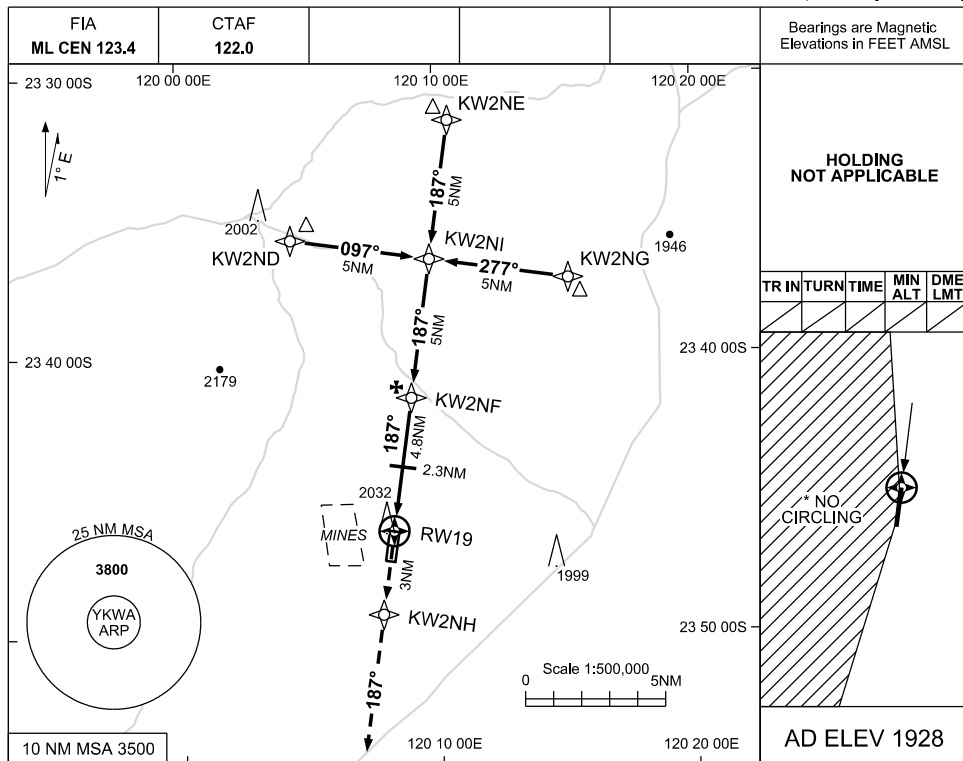


USE QNH

RNAV (GNSS) RWY 19

KARLAWINDA MINE, WA (YKWA)

1 DEC 2022

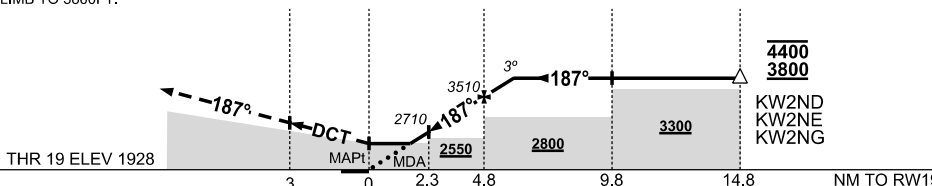


NM TO NEXT WPT	RW19	1.5	2	3	4	KW2NF	0.9				
ALT (3° APCH PATH)		2470	2610	2930	3250	3510	3800				

MISSED APPROACH:

TRACK DCT TO KW2NH, THEN TRACK 187°. CLIMB TO 3800FT.

MAHF MAPt FAF IF IAF
 KW2NH RW19 KW2NF KW2NI



NOTES

- MAX IAS: INITIAL: 210KT
- NO CIRCLING WEST OF RWY 01/19
- CAUTION: PROC OVERLAID BY PROCS AY YNWN. PRESCRIBED MAXIMUM ALTITUDES ENSURE SEPARATION
- CAUTION: BLASTING REFER ERSA

CATEGORY	A	B	C	D
LNAV	2470 (542 - 3.1)			NOT AUTHORISED
* CIRCLING	2550 (622-2.4)		2690(762-4.0)	
ALTERNATE	(1122-4.4)		(1262-6.0)	

Changes: FROM SUP H56/22

KWAGN02-173