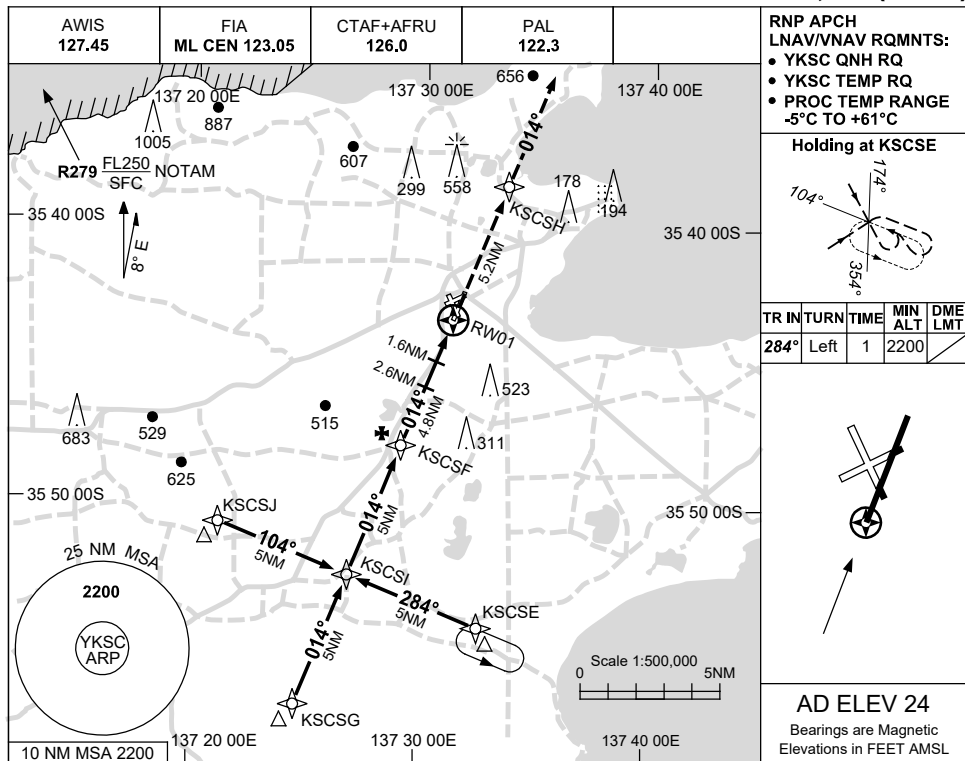


**USE QNH
KINGSCOTE/KANGAROO ISLAND, SA (YKSC)**

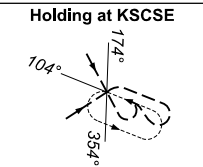
RNP RWY 01

1 DEC 2022

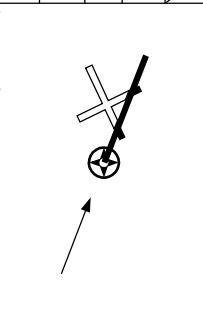


**RNP APCH
LNAV/VNAV RQMTS:**

- YKSC QNH RQ
- YKSC TEMP RQ
- PROC TEMP RANGE -5°C TO +61°C

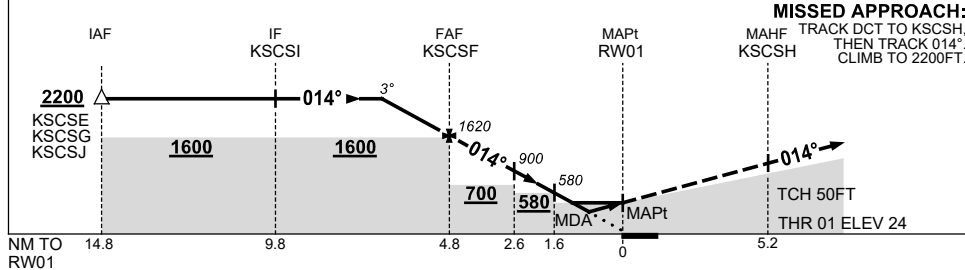


TR IN	TURN	TIME	MIN ALT	DME LMT
284°	Left	1	2200	



AD ELEV 24
Bearings are Magnetic
Elevations in FEET AMSL

NM TO NEXT WPT	1.8	1	KSCSF	4	3	2.6	1.6	1.4	0.8	RWY01
ALT (3° APCH PATH)	2200	1930	1620	1350	1030	900	580	530	340	



NOTES

1. MAX IAS:
INITIAL : 210KT.

CATEGORY	A	B	C	D
LNAV/VNAV		340 (316-1.8)		NOT APPLICABLE
LNAV		530 (506-2.9)		
CIRCLING	840 (816-2.4)		1070 (1046-4.0)	
ALTERNATE		(1316-4.4)	(1546-6.0)	

Changes: CHART TITLE, PBN SPECIFICATION BOX.

KSCGN02-173