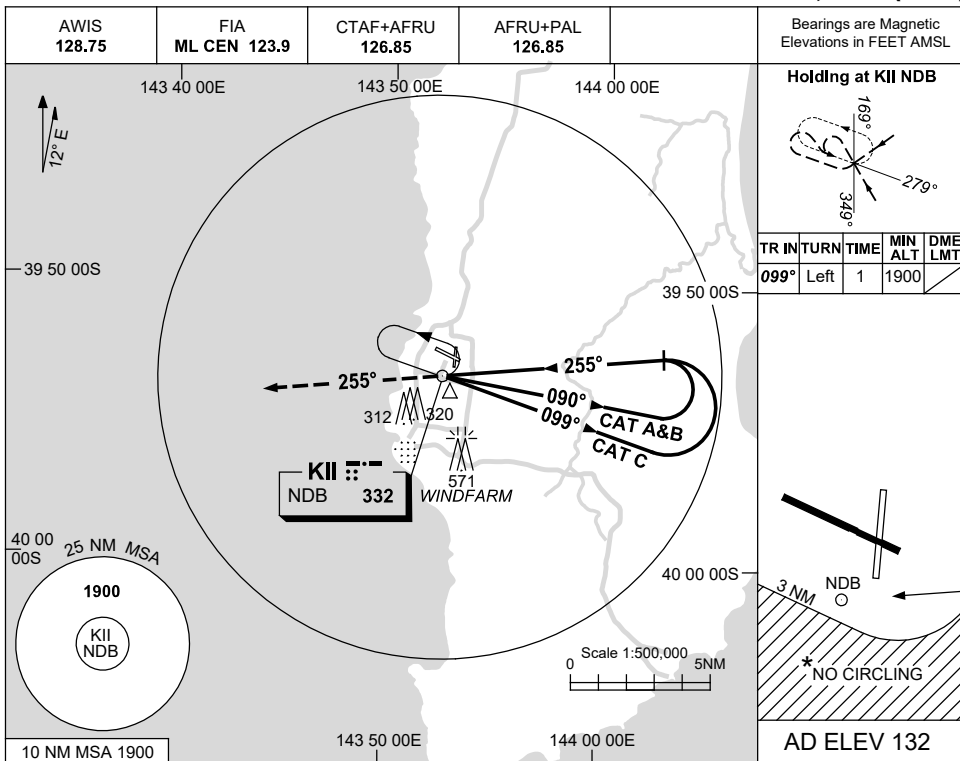


USE QNH

NDB RWY 28
KING ISLAND, TAS (YKII)

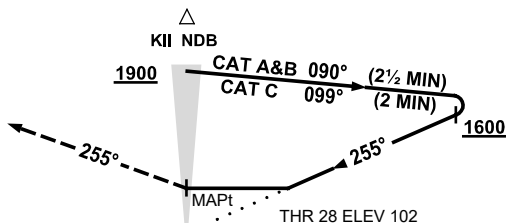
9 SEP 2021



DME DIST	NOT APPLICABLE								
ALT									

MISSSED APPROACH:

TRACK 255°
CLIMB TO 1900FT.



NOTES

CATEGORY	A	B	C	D
S-I NDB	840 (738-4.2)		CIRCLING ONLY	NOT APPLICABLE
CIRCLING *	840 (708-2.4)			
ALTERNATE	(1208-4.4)		940 (808-4.0) (1308-6.0)	

1. MAX IAS:
INITIAL : 210KT.
- * 2. NO CIRCLING
BEYOND 3NM
SOUTH OF RWY
10/28.

Changes: MSA, HOLDING ALT, IAF ALT, MISSED APCH ALT, COORD FORMAT, THR ELEV, Editorial.

KIINB02-168