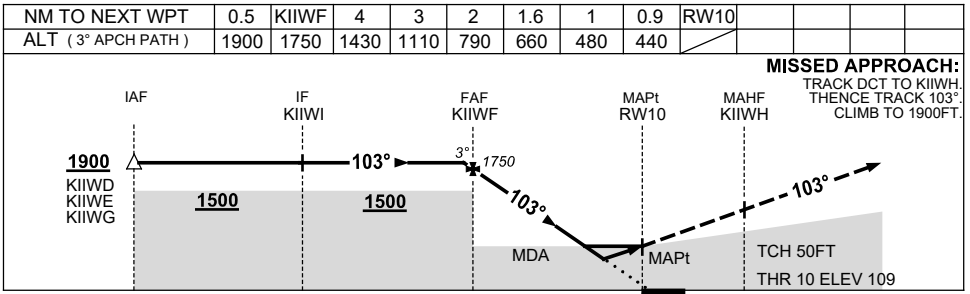
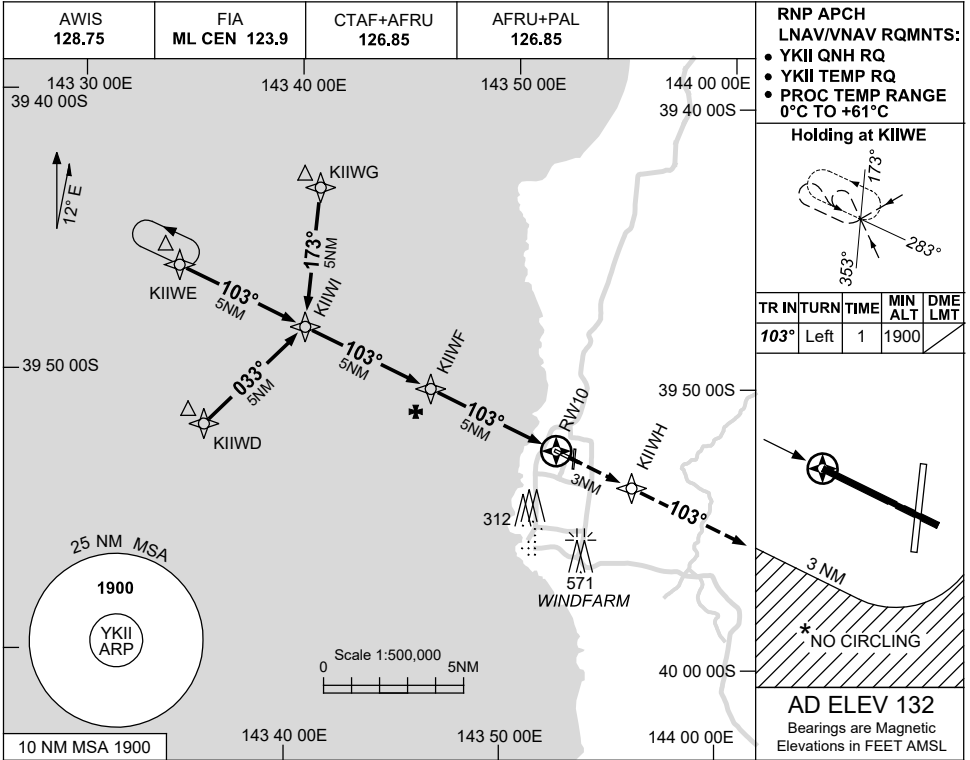


USE QNH

RNP RWY 10

15 JUN 2023

KING ISLAND, TAS (YKII)



NOTES

CATEGORY	A	B	C	D
LNAV/VNAV	440 (331-1.8)			NOT APPLICABLE
LNAV	660 (551-3.1)			
CIRCLING *	840 (708-2.4)		940 (808-4.0)	
ALTERNATE	(1208-4.4)		(1308-6.0)	

- 1. MAX IAS: INITIAL : 210KT.
- * 2. NO CIRCLING BEYOND 3NM SOUTH OF RWY 10/28.

Changes: CHART TITLE, PBN SPECIFICATION BOX, Editorial.

KIIGN02-175