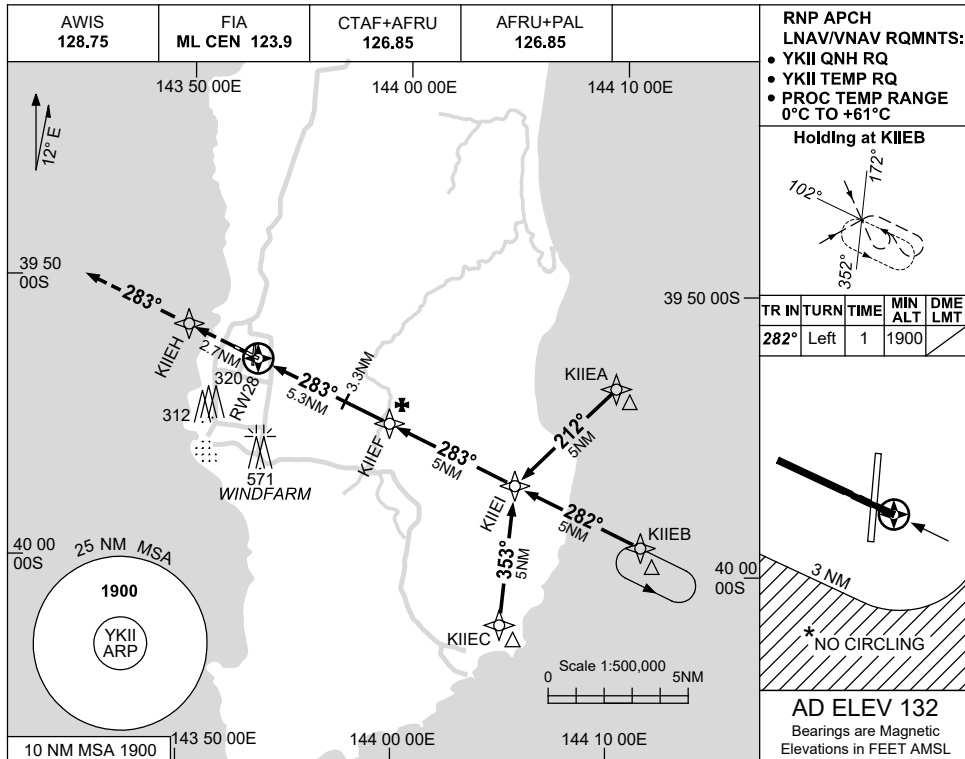


USE QNH

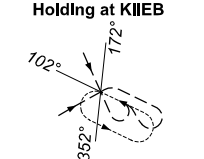
RNP RWY 28

**KING ISLAND, TAS (YKII)**

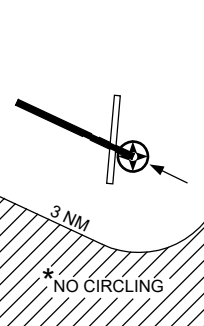
15 JUN 2023



RNP APCH  
LNAV/VNAV RQMTS:  
 • YKII QNH RQ  
 • YKII TEMP RQ  
 • PROC TEMP RANGE  
 0°C TO +61°C

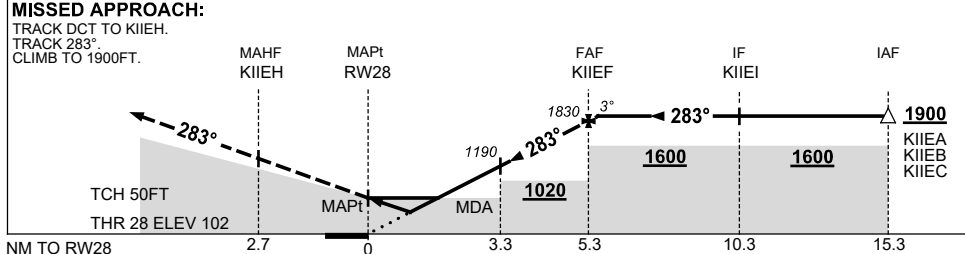


TR	INTURN	TIME	MIN ALT	DME LMT
282°	Left	1	1900	



**AD ELEV 132**  
 Bearings are Magnetic  
 Elevations in FEET AMSL

NM TO NEXT WPT	RW28	1.2	1.8	2	3	4	KIIEF	0.2				
ALT (3° APCH PATH)		530	730	790	1110	1430	1830	1900				



**NOTES**

CATEGORY	A	B	C	D
LNAV/VNAV	530 (428-2.4)			NOT APPLICABLE
LNAV	730 (628-3.6)			
CIRCLING *	840 (708-2.4)		940 (808-4.0)	
ALTERNATE	(1208-4.4)		(1308-6.0)	

- MAX IAS: INITIAL : 210KT
- \* 2. NO CIRCLING BEYOND 3NM SOUTH OF RWY 10/28.

Changes: CHART TITLE, PBN SPECIFICATION BOX, Editorial.

KIIGN01-175