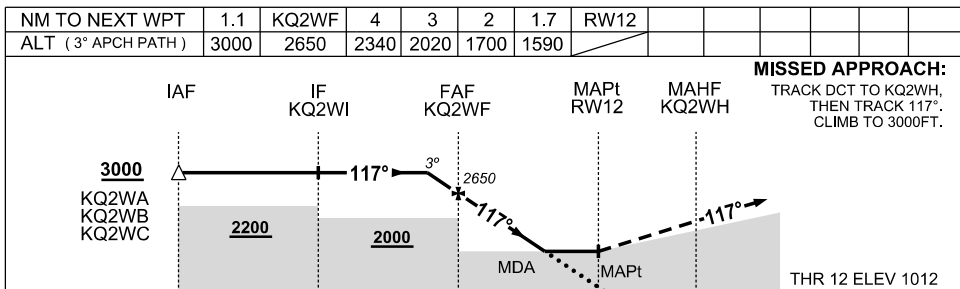
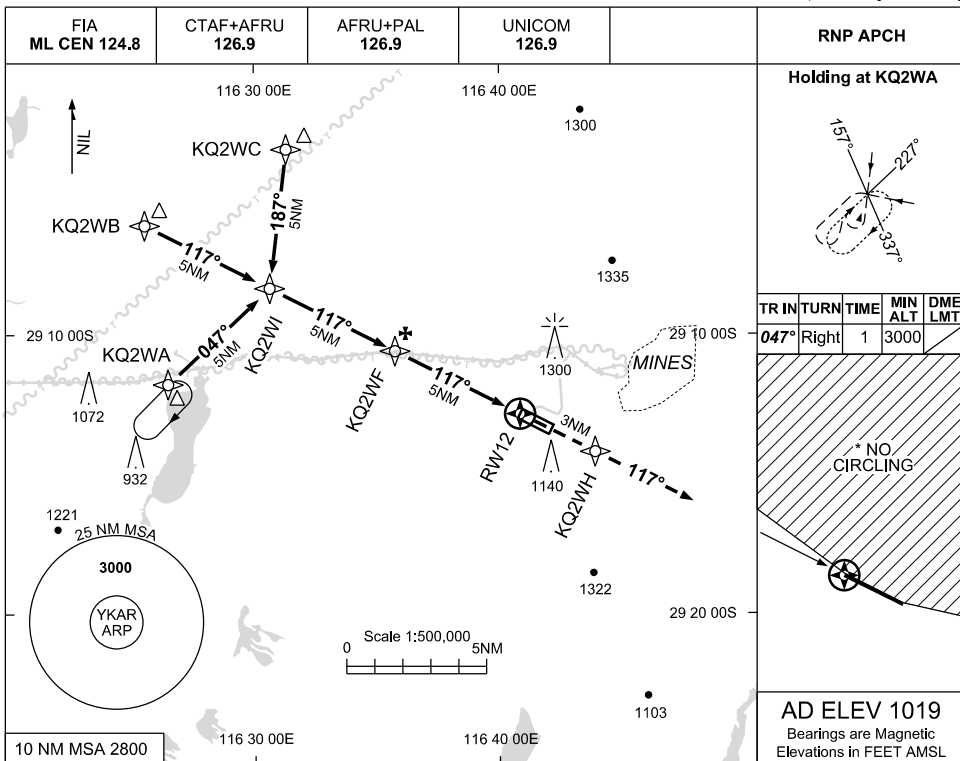


7 SEP 2023

USE QNH

RNP RWY 12  
**KARARA, WA (YKAR)**



**NOTES**

CATEGORY	A	B	C	D
LNAV	1590 (571-3.2)			NOT AUTHORISED
CIRCLING *	1740 (721-2.4)		1910(891-4.0)	
ALTERNATE	(1221-4.4)		(1391-6.0)	

- 1. MAX IAS : INITIAL: 210KT
- \*2. NO CIRCLING NORTH OF RWY 12/30.

Changes: CHART TITLE, PBN SPECIFICATION BOX, EDITORIAL

KARGN01-176

