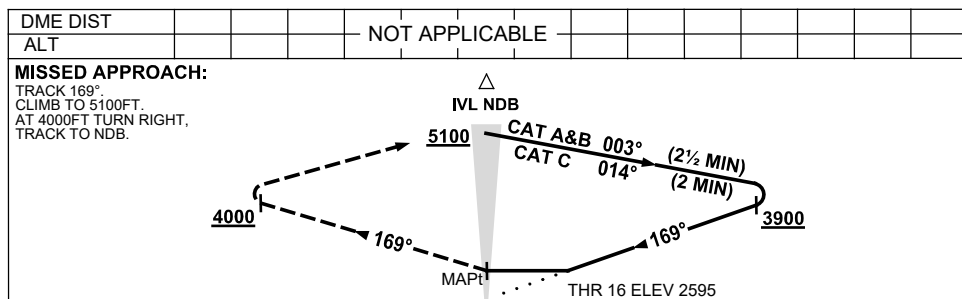
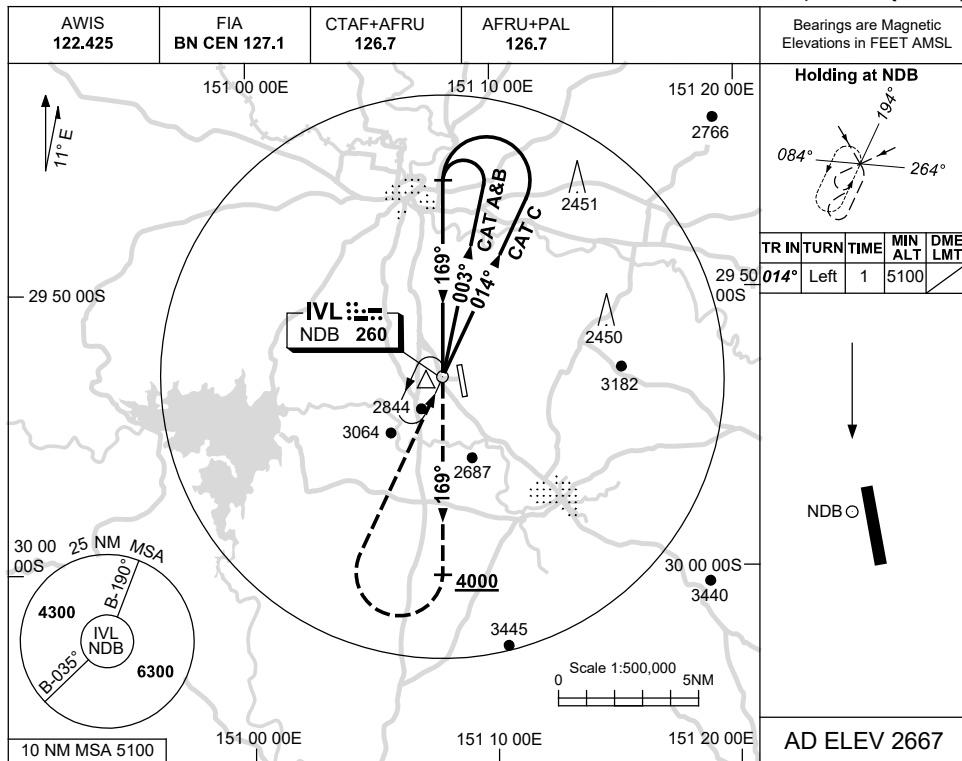


USE QNH

NDB RWY 16

16 JUN 2022

INVERELL, NSW (YIVL)



**NOTES**

CATEGORY	A	B	C	D
S-I NDB	3220 (625-3.6)			NOT APPLICABLE
CIRCLING	3350 (683-2.4)		3720 (1053-4.0)	
ALTERNATE	(1183-4.4)		(1553-6.0)	

1. MAX IAS:  
 HOLDING: 210KT.  
 INITIAL : 210KT.

Changes: AWIS.

IVLNB01-171