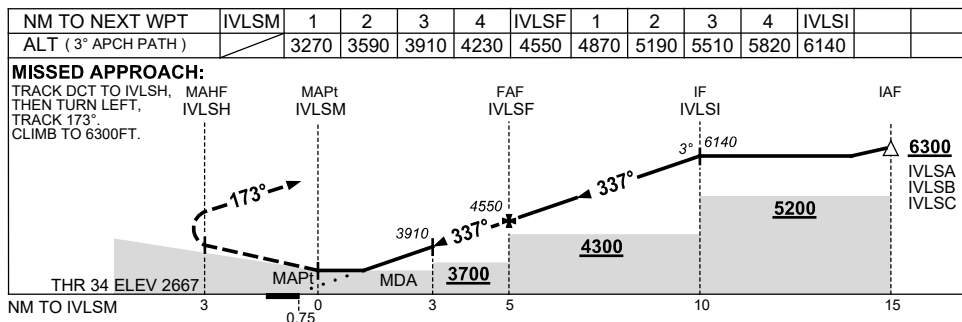
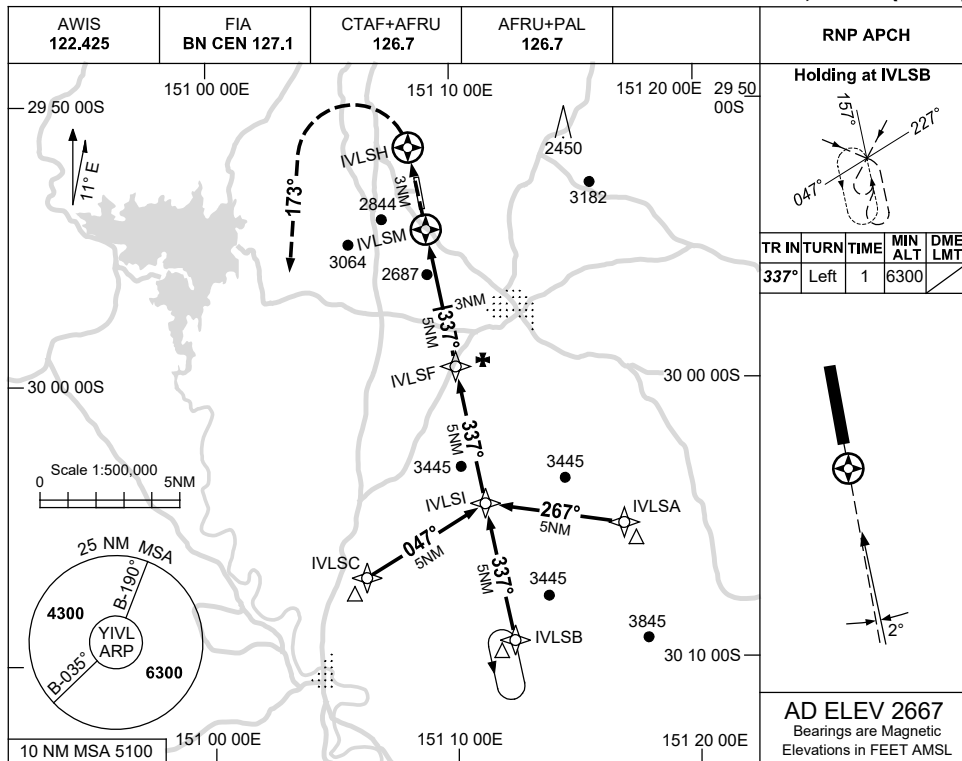


USE QNH

RNP RWY 34  
**INVERELL, NSW (YIVL)**

16 JUN 2022



**NOTES**

CATEGORY	A	B	C	D
LNAV	3270 (603-3.4)			NOT APPLICABLE
CIRCLING	3350 (683-2.4)		3720(1053-4.0)	
ALTERNATE	(1183-4.4)		(1553-6.0)	

1. MAX IAS: INITIAL : 210KT.

Changes: AWIS.

IVLGN01-171