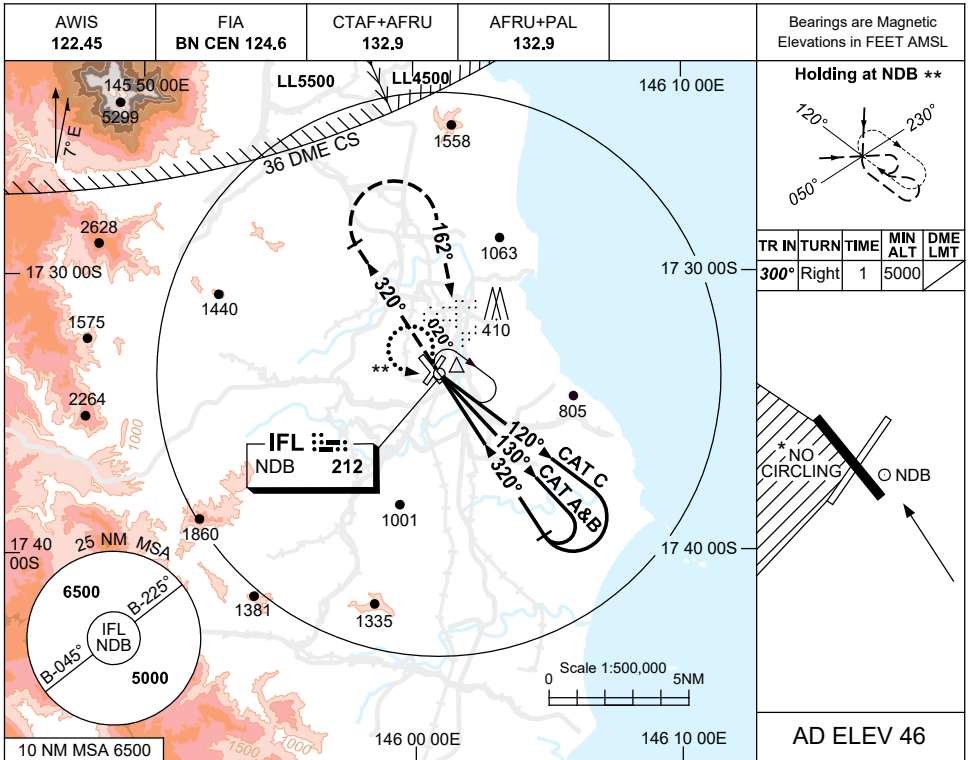


USE QNH

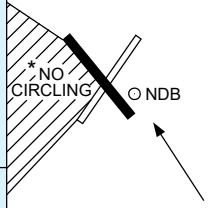
NDB-A

INNISFAIL/MUNDGOO, QLD (YIFL)

7 SEP 2023



TR	IN	TURN	TIME	MIN ALT	DME LMT
300°	Right		1	5000	

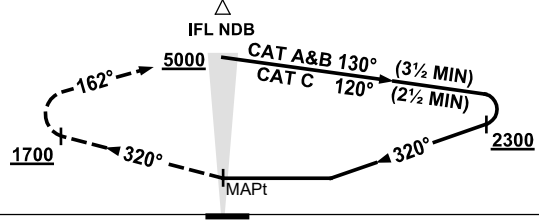


AD ELEV 46

DME DIST	NOT APPLICABLE				
ALT					

MISSED APPROACH:

TRACK 320°
AT 1700FT TURN RIGHT,
TRACK 162°.
CLIMB TO 5000FT.



NOTES

1. MAX IAS:
INITIAL : 210KT.
- *2. NO CIRCLING IN SECTOR WEST OF RWY 14 & RWY 03.
3. MISS APCH MAY PENETRATE CS CTA.
4. PROC TURN(80°/260°)
** RQ TO JOIN PROC FROM HOLD
5. COLOUR: SEE SPEC NOTICES.

CATEGORY	A	B	C	D
CIRCLING *	930 (884-2.4)		1480 (1434-4.0)	NOT APPLICABLE
ALTERNATE	(1384-4.4)		(1934-6.0)	

Changes: MISSED APPROACH INSTRUCTIONS, Editorial.

IFLN01-176