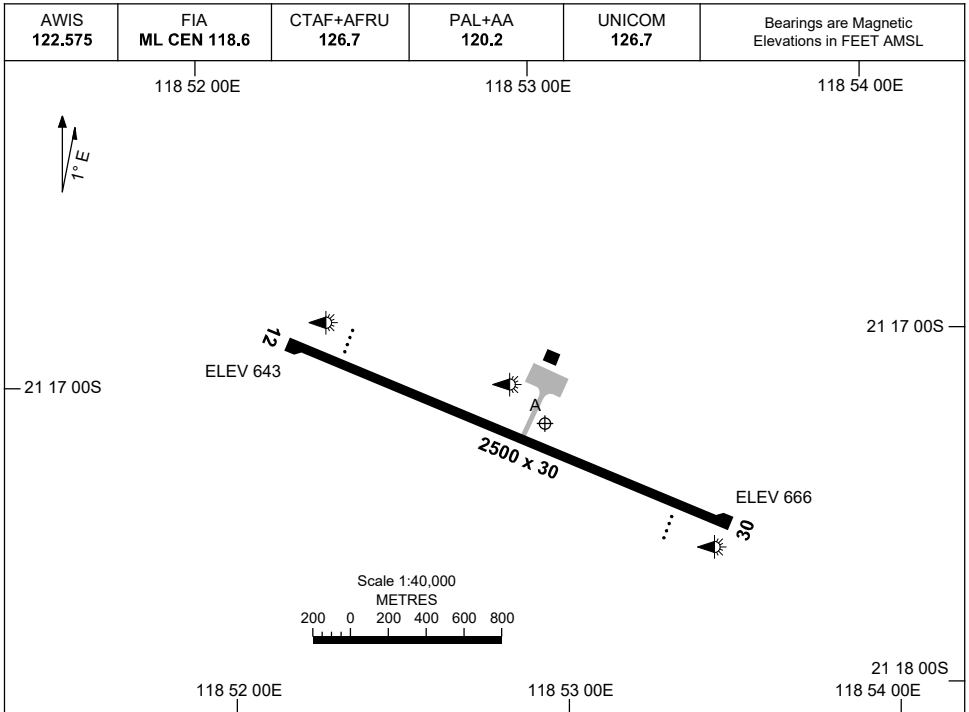


**1 DEC 2022**

AD ELEV 666  
21 17 12S 118 52 59E

**AERODROME CHART**  
**IRON BRIDGE MINE, WA (YIBO)**



<b>RWY</b>	<b>AERODROME LIGHTING</b>	
	TAXIWAY : BLUE EDGE RL : PAL+AA 120.2, SDBY (20 SEC)	
<b>12</b> <sup>115</sup>	PAPI 3.0° 53FT LIRL PTBL	
<sup>295</sup> <b>30</b>	PAPI 3.0° 53FT LIRL PTBL	

**NOTES**

1. AFRU NOT AVBL ON GROUND.
2. AWIS RQ 3 ONE-SECOND PULSES TO ACTIVATE.
3. ALL LIGHTING MANUALLY ACTIVATED BY ARO 30 MIN PRIOR TO SCHEDULED ARRIVAL AND DEACTIVATED 15 MIN AFTER DEPARTURE.
4. RWY 12/30 PTBL LIGHTING AVBL WITH 90MIN PN.

Changes: NOTE 4.

IBOARD01-173