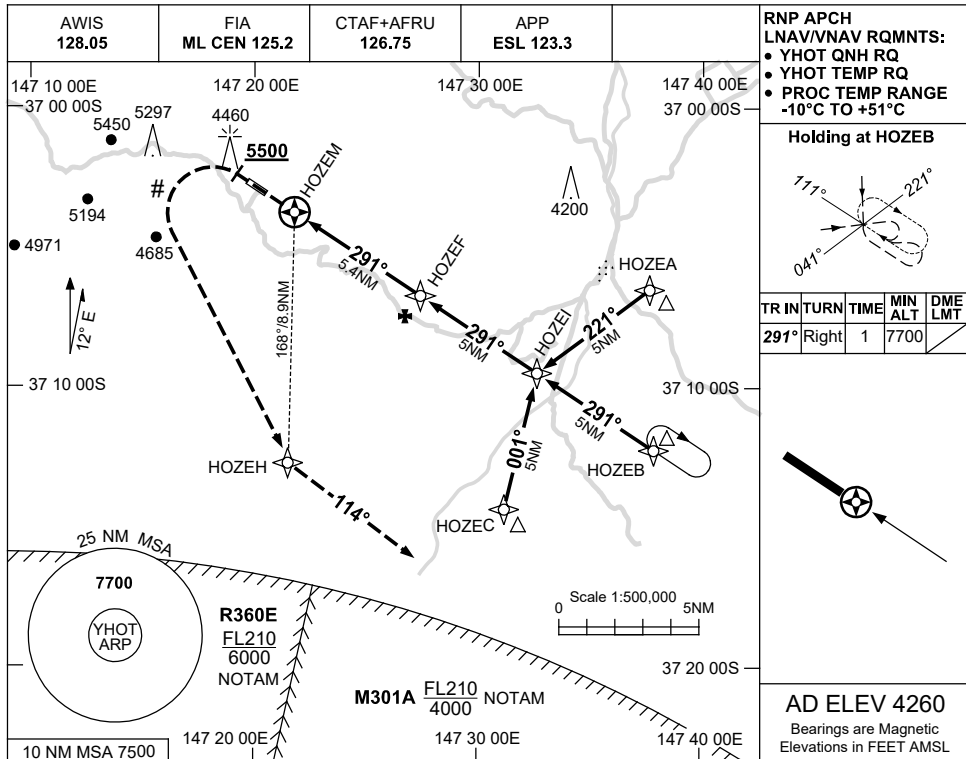


USE QNH

RNP RWY 29

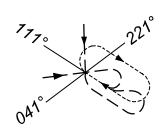
30 NOV 2023

MOUNT HOTHAM, VIC (YHOT)

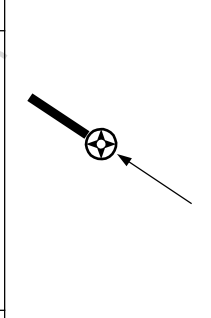


RNP APCH  
LNAV/VNAV RQMNTS:  
• YHOT QNH RQ  
• YHOT TEMP RQ  
• PROC TEMP RANGE  
-10°C TO +51°C

Holding at HOZEB



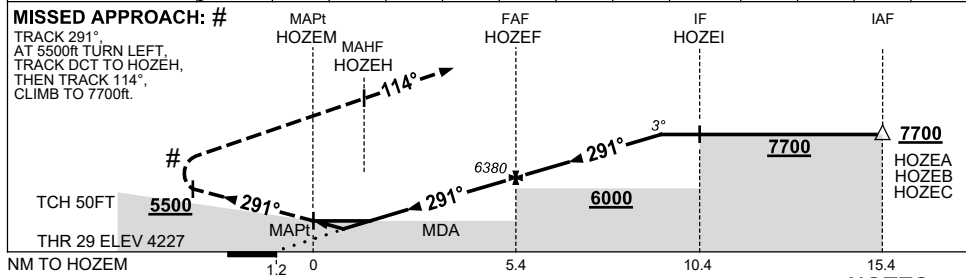
TR IN	TURN	TIME	MIN ALT	DME LMT
291°	Right	1	7700	



AD ELEV 4260

Bearings are Magnetic  
Elevations in FEET AMSL

NM TO NEXT WPT	HOZEM	0.1	0.4	0.7	1	2	3	4	HOZEF	1	2	3	4.1
ALT (3° APCH PATH)		4700	4800	4890	4990	5300	5620	5940	6380	6700	7020	7330	7700



CATEGORY	A	B	C	D
LNAV/VNAV (2.5% MAP)		4890 (663-3.8)		NOT APPLICABLE
LNAV/VNAV # (3.3% MAP)		4700 (473-2.7)		
LNAV (2.5% MAP)		4990 (763-4.4)		
LNAV # (3.3% MAP)		4800 (573-3.3)		
CIRCLING	5450 (1190-2.4)	5880 (1620-4.0)		
ALTERNATE	(1690-4.4)	(2120-6.0)		

- NOTES**
- MAX IAS:  
INITIAL : 210KT  
MAP TURN: 210KT.
  - MIN MAP GRAD 3.3%  
TO 5500FT, THEN 2.5%.
  - HLDG NOT AVBL WHEN  
M301A ACTIVE.

Changes: R359E/F DELETED, R360E, M301A, Editorial.

HOTGN01-177