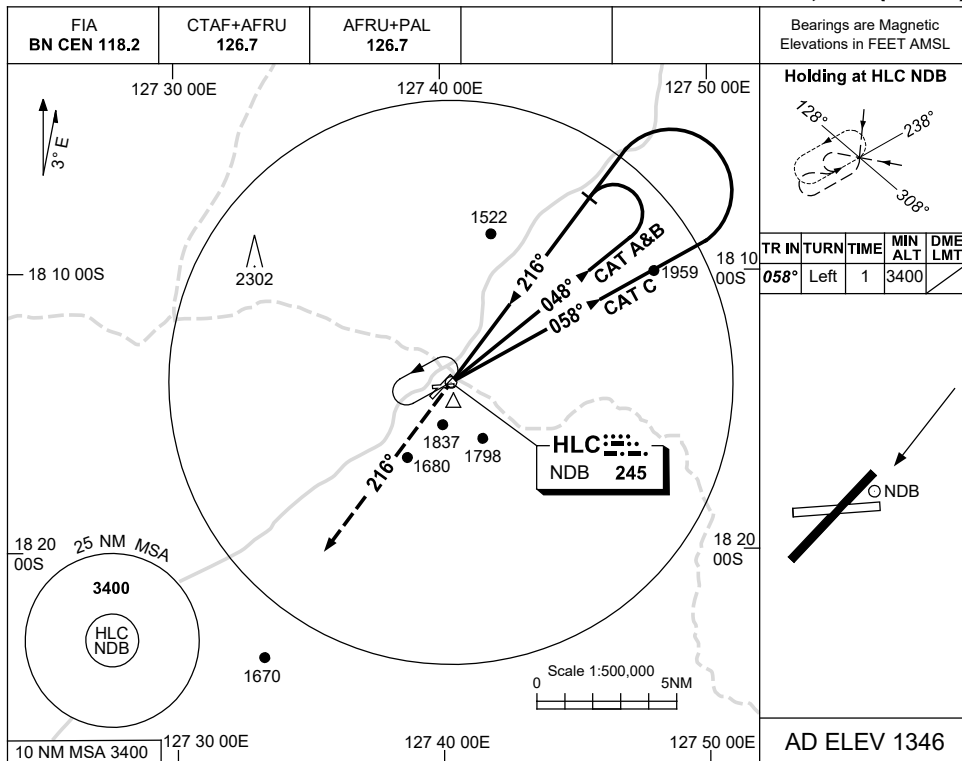


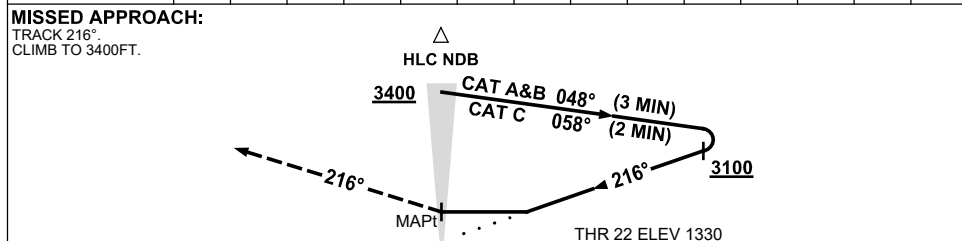
USE QNH

NDB RWY 22
HALLS CREEK, WA (YHLC)

24 MAR 2022



DME DIST	NOT APPLICABLE				
ALT					



NOTES

CATEGORY	A	B	C	D
S-I NDB	2350 (1020-5.0)			NOT APPLICABLE
CIRCLING	2350 (1004-2.4)	2450 (1104-4.0)		
ALTERNATE	(1504-4.4)		(1604-6.0)	

1. MAX IAS:
INITIAL :
CAT A&B 130KT.
CAT C 190KT.
2. AWIS (PHONE)
08 6216 2617

Changes: THR ELEV, S-I MINIMA.

HLCNB02-170