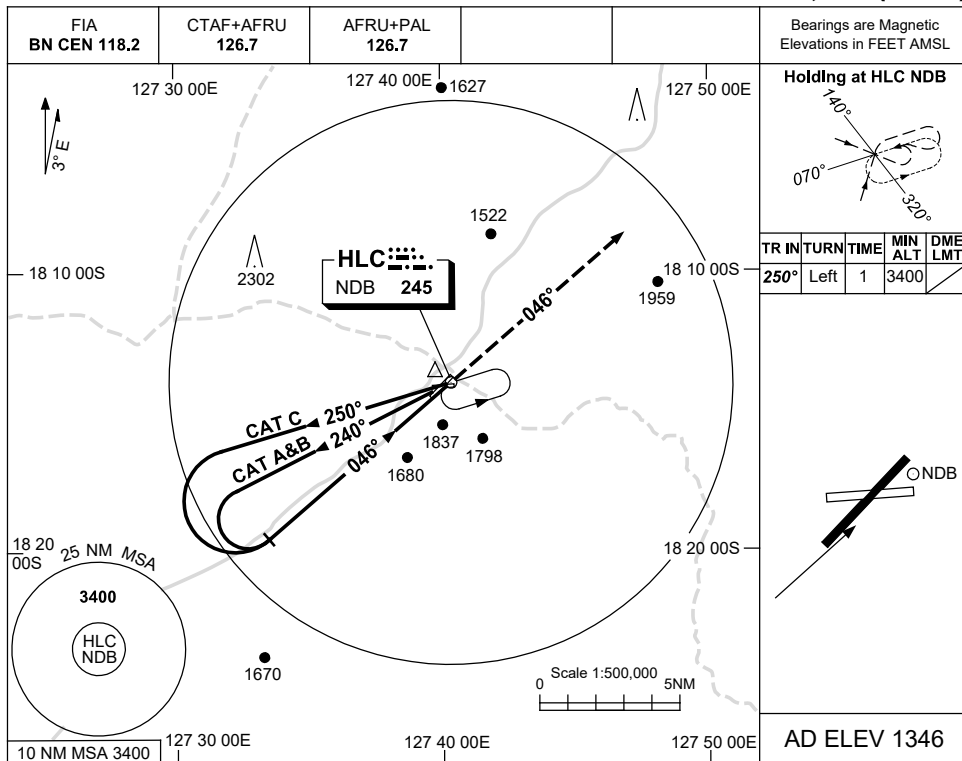


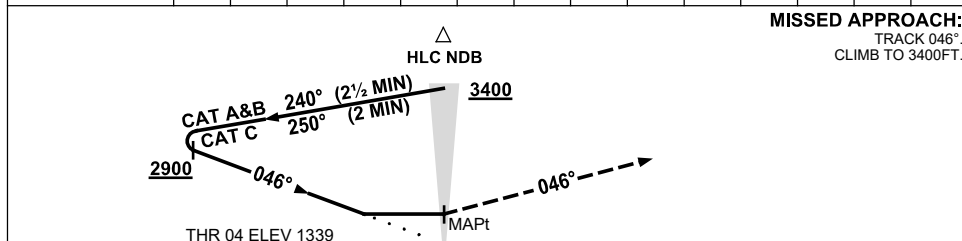
USE QNH

NDB RWY 04
HALLS CREEK, WA (YHLC)

24 MAR 2022



DME DIST					
ALT		NOT APPLICABLE			



NOTES

CATEGORY	A	B	C	D
S-I NDB	2220 (874-5.0)			NOT APPLICABLE
CIRCLING	2350 (1004-2.4)	2450 (1104-4.0)		
ALTERNATE	(1504-4.4)	(1604-6.0)		

1. MAX IAS:
INITIAL :
CAT A&B 140KT.
CAT C 210KT.
2. AWIS (PHONE)
08 6216 2617

Changes: THR ELEV.

HLCNB01-170