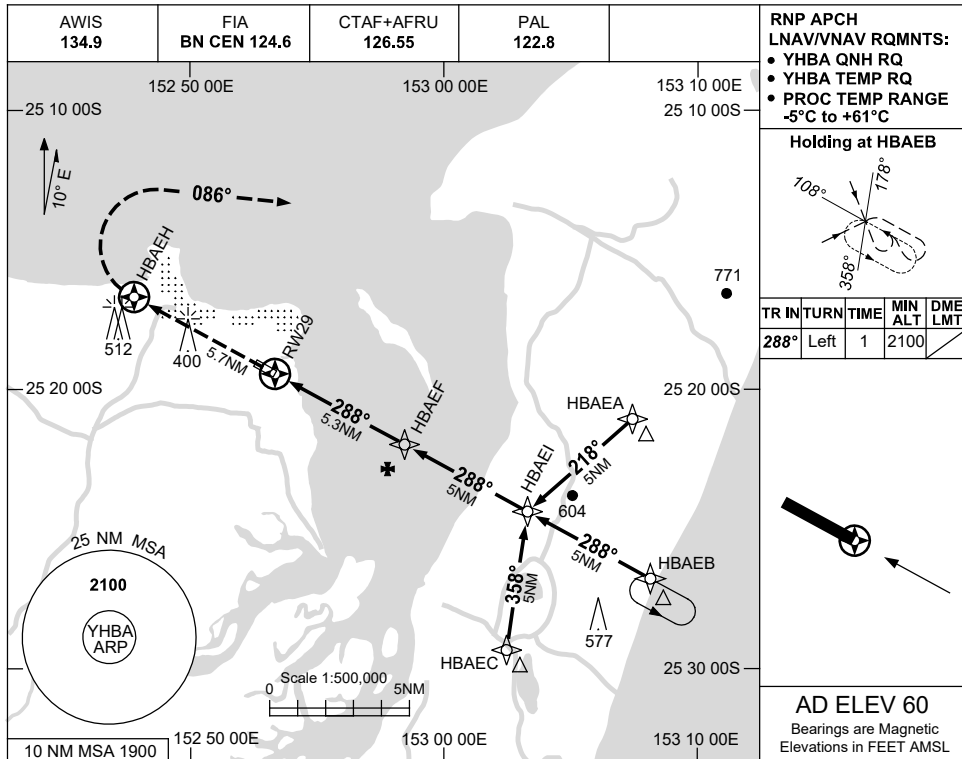


USE QNH

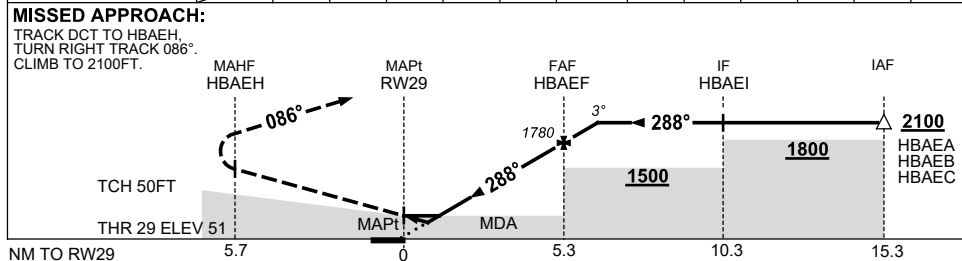
RNP RWY 29

24 MAR 2022

HERVEY BAY, QLD (YHBA)



NM TO NEXT WPT	RW29	0.8	1.3	2	3	4	HBAEF	1				
ALT (3° APCH PATH)		340	530	740	1060	1370	1780	2100				



NOTES

CATEGORY	A	B	C	D	
LNAV/VNAV	340 (289-1.6)			NOT APPLICABLE	
LNAV	530 (479-2.7)				
CIRCLING	800 (740-2.4)		900 (840-4.0)		
ALTERNATE	(1240-4.4)		(1340-6.0)		

1. MAX IAS: INITIAL : 210KT.
2. YMYB RNP RWY 17 OVERLIES MISSED APCH.

Changes: CHART TITLE, PBN SPECIFICATION BOX, Editorial. HBAGN02-170