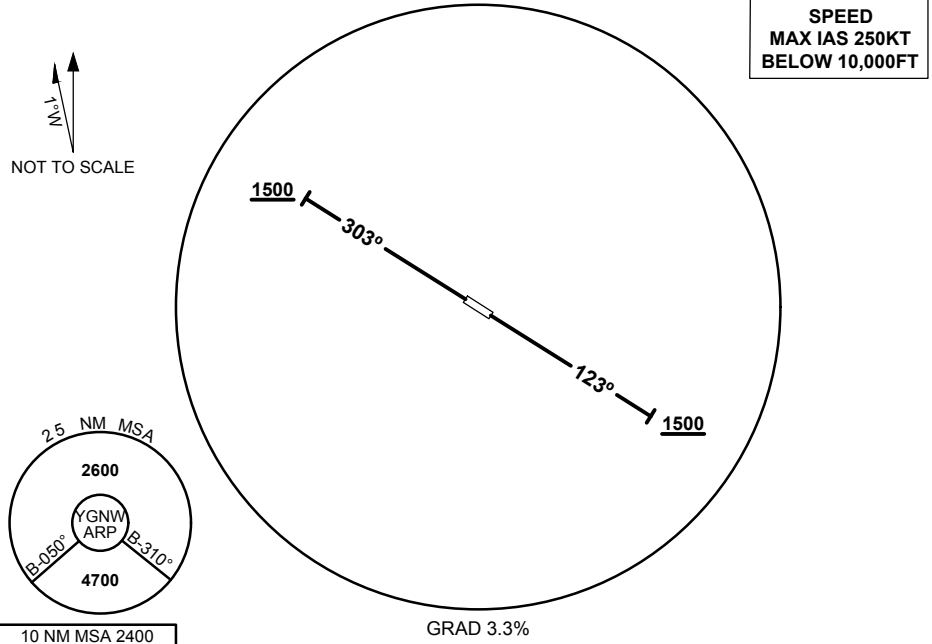


STANDARD INSTRUMENT DEPARTURES (SID)  
 GNOWANGERUP ONE DEPARTURE  
**GNOWANGERUP, WA (YGNW)**

9 SEP 2021

|                     |               |               |  |  |  |
|---------------------|---------------|---------------|--|--|--|
| FIA<br>ML CEN 125.4 | CTAF<br>126.7 | PAL<br>120.15 |  |  | Bearings are Magnetic<br>Elevations in FEET AMSL |
|---------------------|---------------|---------------|--|--|--|



**GNOWANGERUP ONE DEPARTURE**  
**RWY 12**

- Track 123°
- AT or ABV 1500FT turn as required
- Continue climb to 4700FT
- Intercept flight plan route

**RWY 30**

- Track 303°
- AT or ABV 1500FT turn as required
- Continue climb to 4700FT
- Intercept flight plan route

**NOTES**

- NIL -

