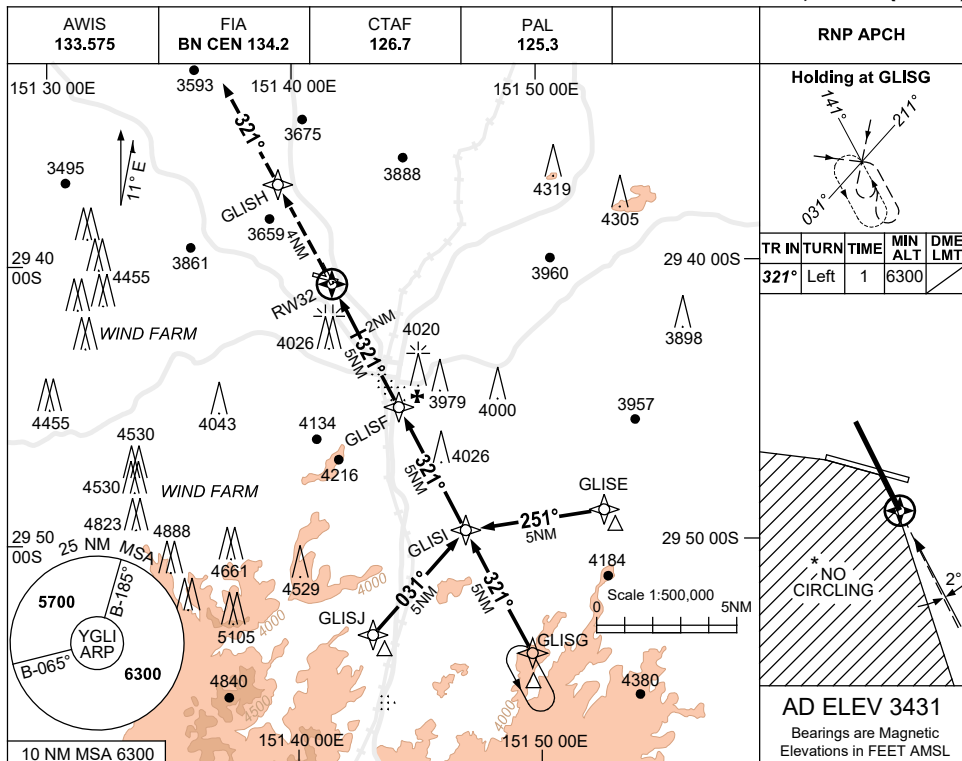


USE QNH

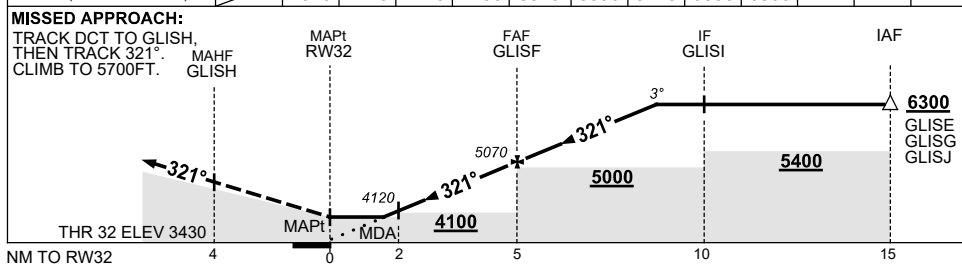
RNP RWY 32

1 DEC 2022

GLEN INNES, NSW (YGLI)



NM TO NEXT WPT	RW32	1.8	2	3	4	GLISF	1	2	3	3.8			
ALT (3° APCH PATH)		4040	4120	4440	4750	5070	5390	5710	6030	6300			



NOTES

CATEGORY	A	B	C	D
LNAV	4040 (609-3.5)			NOT APPLICABLE
CIRCLING*	4370 (939-2.4)		4530 (1099-4.0)	
ALTERNATE	(1439-4.4)		(1599-6.0)	

- * 1. MAX IAS: INITIAL : 210KT.
- 2. NO CIRCLING IN SECTOR SW OF RWYS 10/28 AND 14/32.
- 3. COLOUR: SEE SPEC NOTICES.

Changes: AWIS, NOTES.

GLIGN02-173