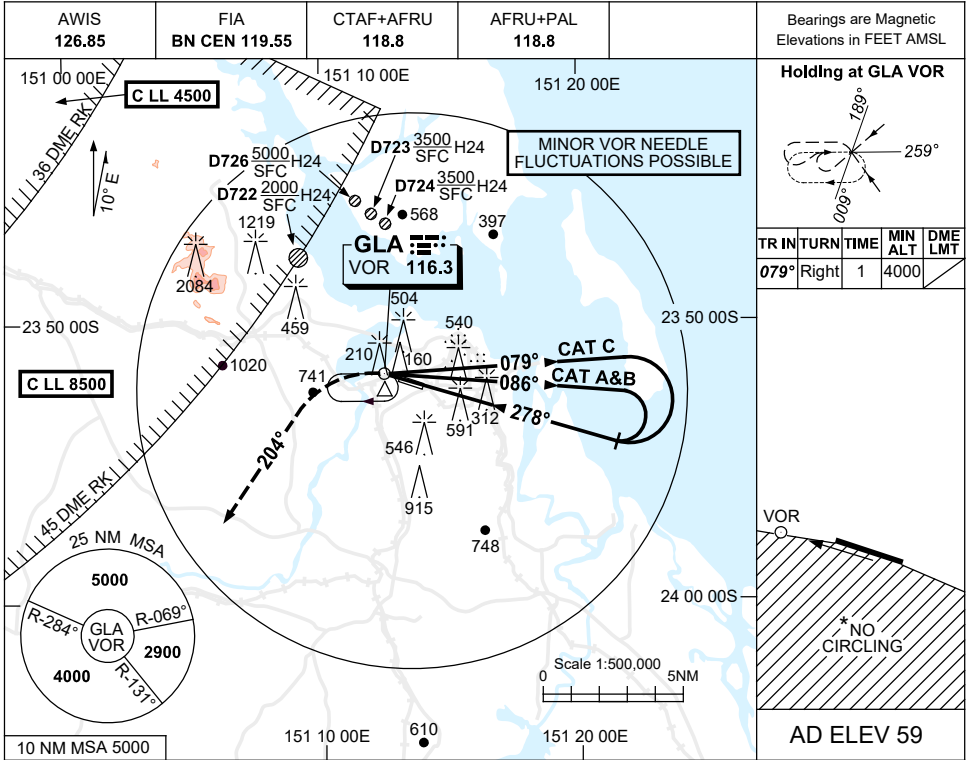


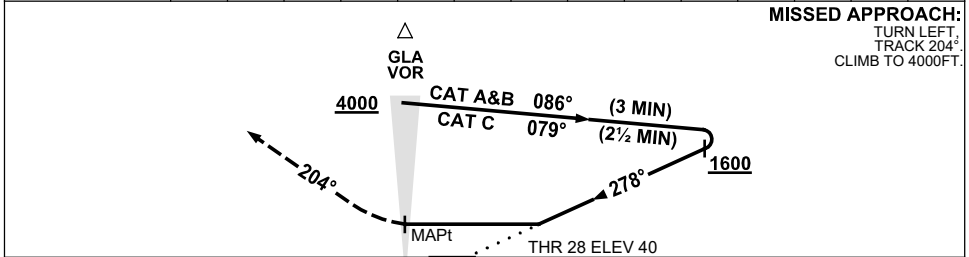
16 JUN 2022

USE QNH

VOR RWY 28
GLADSTONE, QLD (YGLA)



DME DIST	NOT APPLICABLE									
ALT										



NOTES

1. MAX IAS:
INITIAL:
CAT C 210KT.
- * 2. NO CIRCLING STH OF RWY 10/28.
3. COLOUR: SEE SPEC NOTICES.
4. PROC OVERLIES FACING ISLAND (YFLD) RNP 125. ACFT SEPARATION NOT ASSURED.

CATEGORY	A	B	C	D
S-I VOR	990 (950-5.0)			NOT APPLICABLE
CIRCLING *	990 (931-2.4)		1170 (1111-4.0)	
ALTERNATE	(1431-4.4)		(1611-6.0)	

Changes: NOTE 4.

GLAV001-171