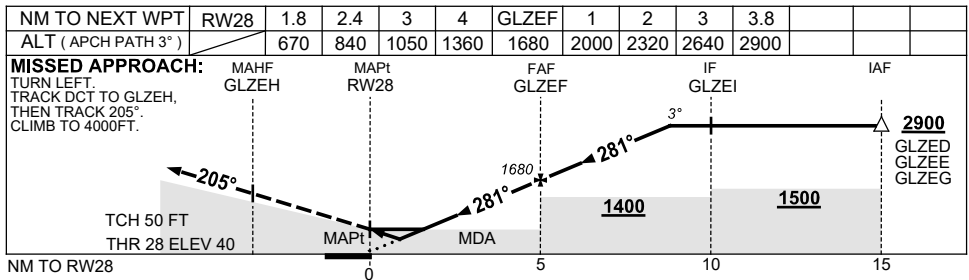
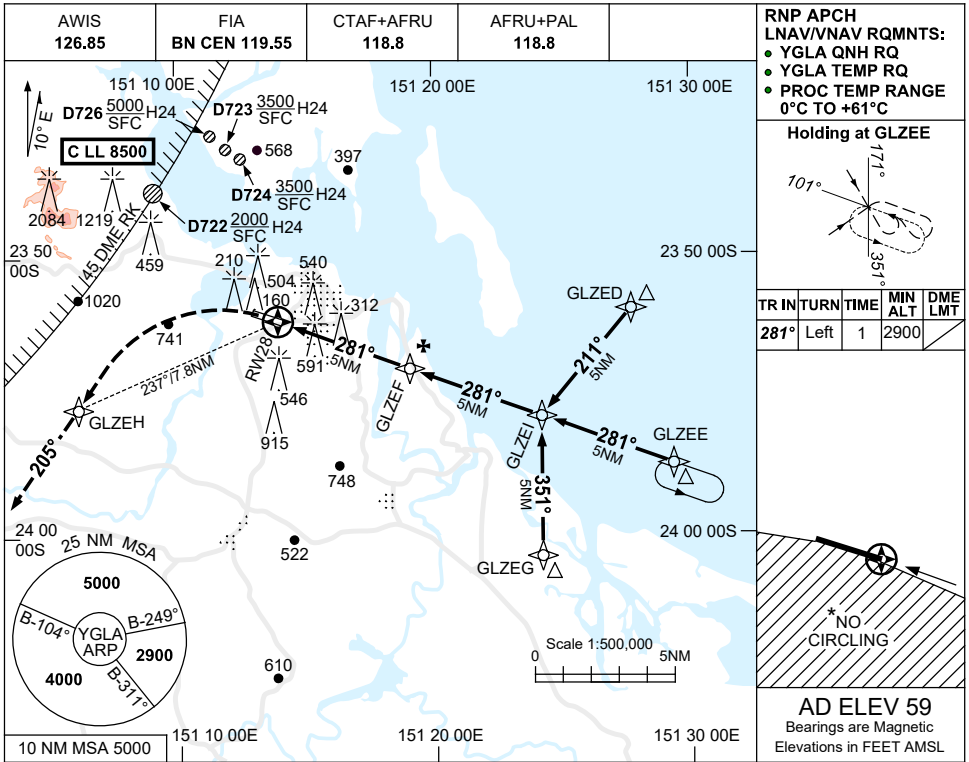


24 MAR 2022

USE QNH

RNP RWY 28
GLADSTONE, QLD (YGLA)



NOTES

1. MAX IAS:
INITIAL : 210KT.
- *2. NO CIRCLING STH OF RWY 10/28.
3. COLOUR: SEE SPEC NOTICES.
4. PROC OVERLIES FACING ISLAND (YFLD) RNP 125. ACFT SEPARATION NOT ASSURED.

CATEGORY	A	B	C	D
LNAV/VNAV	670 (630-3.6)			NOT APPLICABLE
LNAV	840 (800-4.6)			
CIRCLING *	990 (931-2.4)		1170 (1111-4.0)	
ALTERNATE	(1431-4.4)		(1611-6.0)	

Changes: CHART TITLE, PBN SPECIFICATION BOX, NOTE 4.

GLAGN02-170