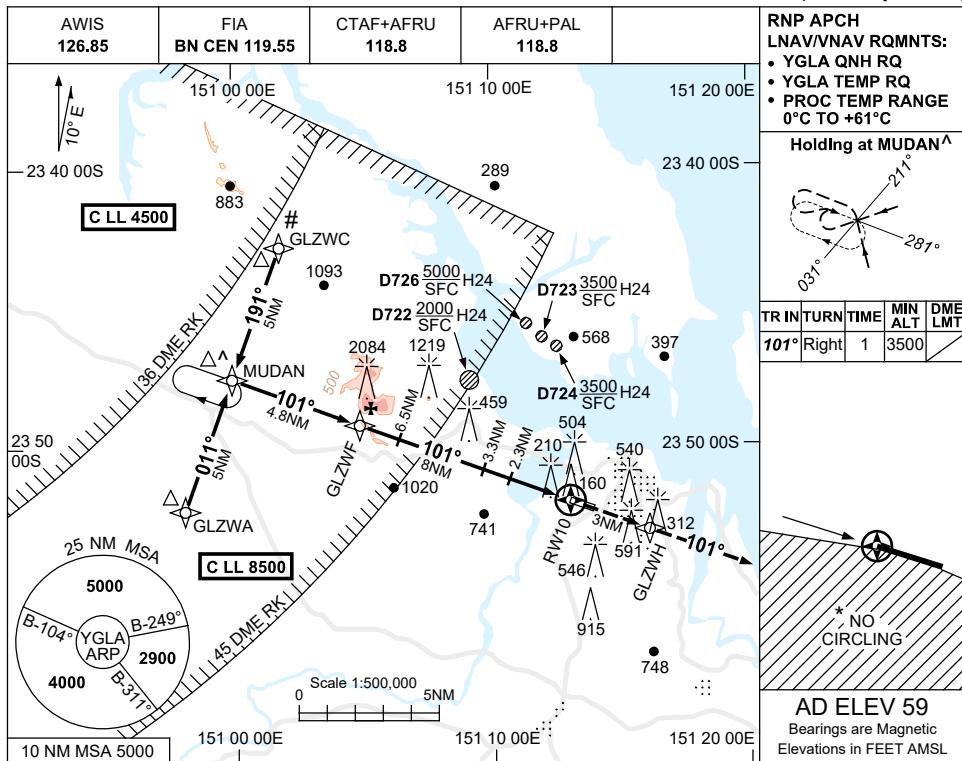


USE QNH

RNP RWY 10

21 MAR 2024

GLADSTONE, QLD (YGLA)



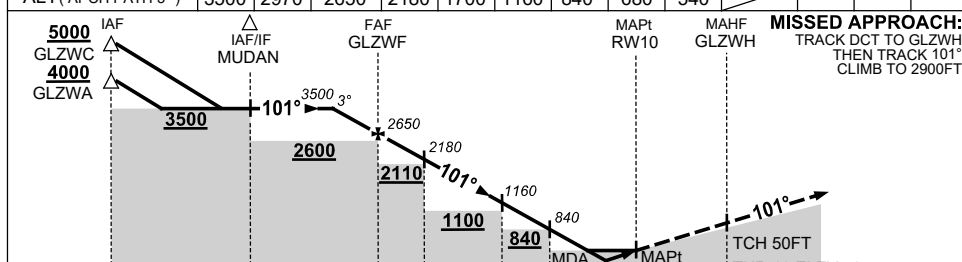
RNP APCH
LNAV/VNAV RQMTS:
 • YGLA QNH RQ
 • YGLA TEMP RQ
 • PROC TEMP RANGE 0°C TO +61°C

Holding at MUDAN[^]

TR IN	TURN	TIME	MIN ALT	DME LMT
101°	Right	1	3500	

AD ELEV 59
 Bearings are Magnetic
 Elevations in FEET AMSL

NM TO NEXT WPT	2.7	1	GLZWF	6.5	5	3.3	2.3	1.8	1.4	RW10
ALT (APCH PATH 3°)	3500	2970	2650	2180	1700	1160	840	680	540	



MISSED APPROACH:
 TRACK DCT TO GLZWH,
 THEN TRACK 101°
 CLIMB TO 2900FT.

NM TO RW10	17.8	12.8	8	6.5	3.3	2.3	0	3
------------	------	------	---	-----	-----	-----	---	---

CATEGORY	A	B	C	D
LNAV/VNAV	540 (482-2.7)			NOT APPLICABLE
LNAV	680 (621-3.5)			
CIRCLING*	990 (931-2.4)		1170 (1111-4.0)	
ALTERNATE	(1431-4.4)		(1611-6.0)	

- NOTES**
- MAX IAS:
INITIAL : 210KT.
HOLDING: 220KT.
 - NO CIRCLING STH OF RWY10/28.
 - COLOR: SEE SPEC NOTICES.
 - CAUTION: GLZWC IN CLOSE PROXIMITY TO YBRK CTA.
 - CAUTION: YBRK CTA CLL 4500 OVERLAYS HOLDING PATTERN.

Changes: LNAV/VNAV MINIMA, MINIMUM SEGMENT ALTITUDE. GLAGN01-178