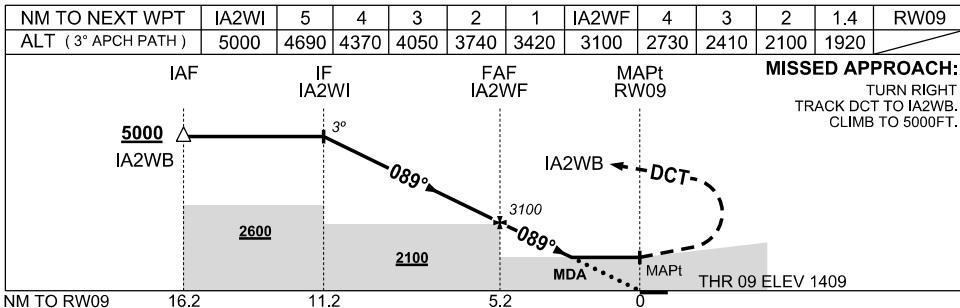
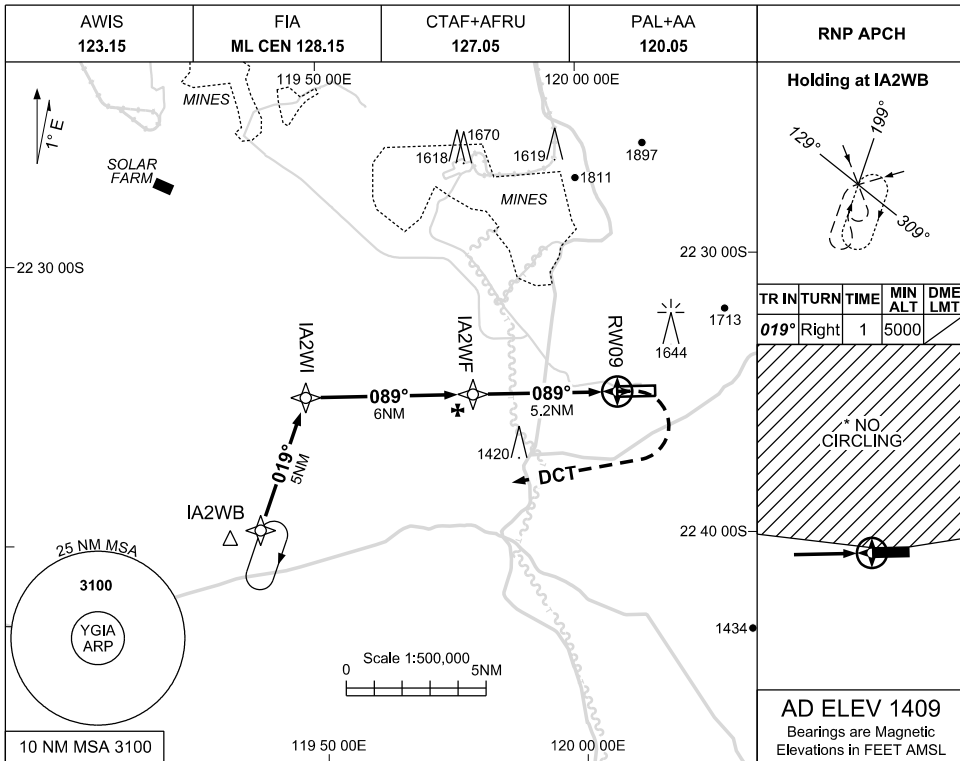


30 NOV 2023

USE QNH

RNP RWY 09  
GINBATA, WA (YGIA)



**NOTES**

- MAX IAS: INITIAL: 210KT  
MAP TURN: 210KT  
HOLDING: 185KT
- \*NO CIRCLING NORTH OF RWY 09/27.
- CAUTION:** UA OPS VTI 13NM RAD OF YGIA ARP

| CATEGORY   | A              | B | C             | D             |
|------------|----------------|---|---------------|---------------|
| LNAV       | 1920 (511-2.9) |   |               |               |
| * CIRCLING | 2010 (601-2.4) |   | 2240(831-4.0) | 2340(931-5.0) |
| ALTERNATE  | (1101-4.4)     |   | (1331-6.0)    | (1431-7.0)    |

Changes: CHART TITLE, EDITORIAL

GIAGN01-177