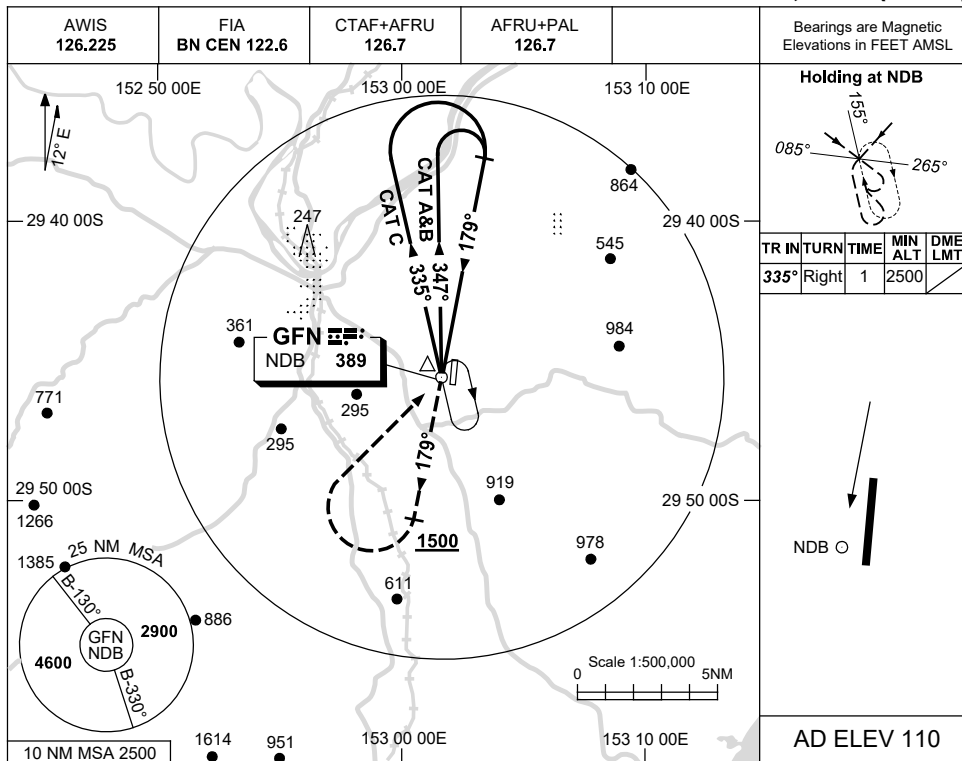


USE QNH

NDB RWY 18
GRAFTON, NSW (YGFN)

25 MAR 2021

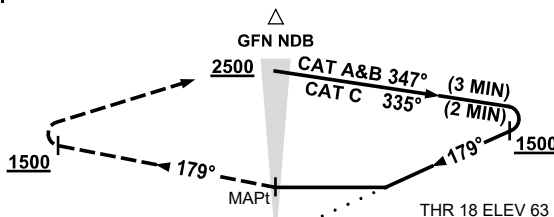


AD ELEV 110

DME DIST	NOT APPLICABLE				
ALT					

MISSED APPROACH:

TRACK 179°.
CLIMB TO 2500FT.
AT 1500FT TURN RIGHT.
TRACK TO GFN NDB.



NOTES

CATEGORY	A	B	C	D
S-I NDB	710 (647-3.7)			NOT APPLICABLE
CIRCLING	780 (670-2.4)	940 (830-4.0)		
ALTERNATE	(1170-4.4)		(1330-6.0)	

- MAX IAS:
HOLDING: 210KT.
INITIAL:
CAT A&B 140KT.
CAT C 210KT.
MAP TURN: 210KT.

Changes: Editorial.

GFNNB01-166