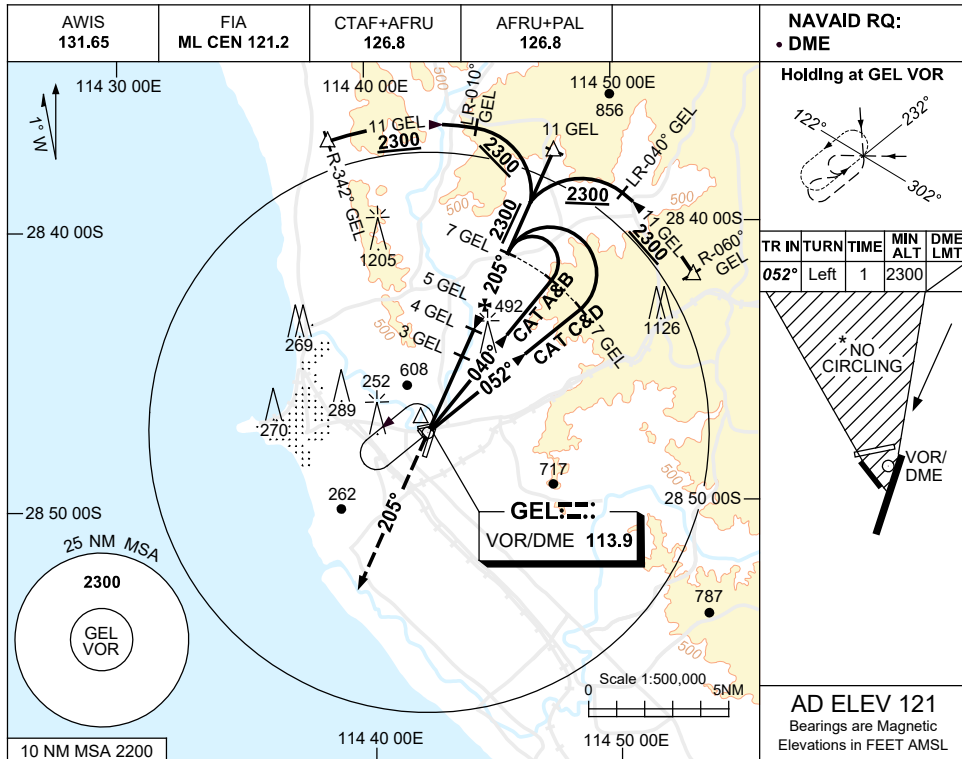


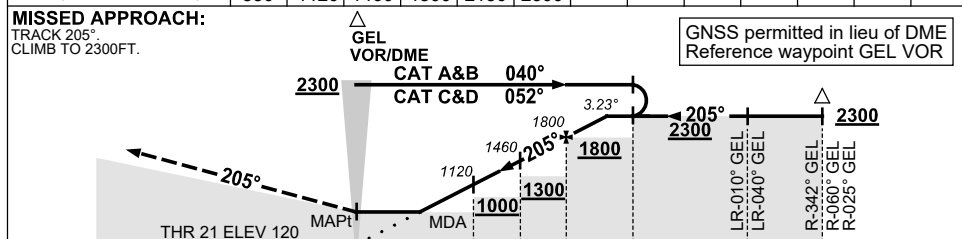
USE QNH

VOR RWY 21
GERALDTON, WA (YGEL)

1 DEC 2022



DIST BY DME	2.2	3	4	5	6	6.5							
ALT (3.23° APCH PATH)	830	1120	1460	1800	2150	2300							



NOTES

1. MAX IAS: INITIAL : 210KT.
- * 2. NO CIRCLING IN SECTOR NORTH OF RWY 14 & RWY 21.
3. APCH PATH ANGLE DOES NOT COINCIDE WITH PAPI ON GLIDE SLOPE INDICATION.
4. COLOUR: SEE SPEC NOTICES.

CATEGORY	A	B	C	D
S-I VOR/DME	830 (709-3.8)			
CIRCLING *	1190 (1069-2.4)	1290 (1169-4.0)	1420 (1299-5.0)	
ALTERNATE	(1569-4.4)	(1669-6.0)	(1799-7.0)	

Changes: NEW CHART.

GELV001-173