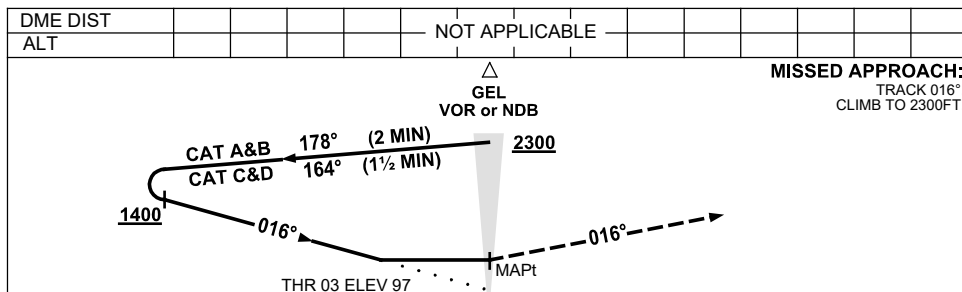
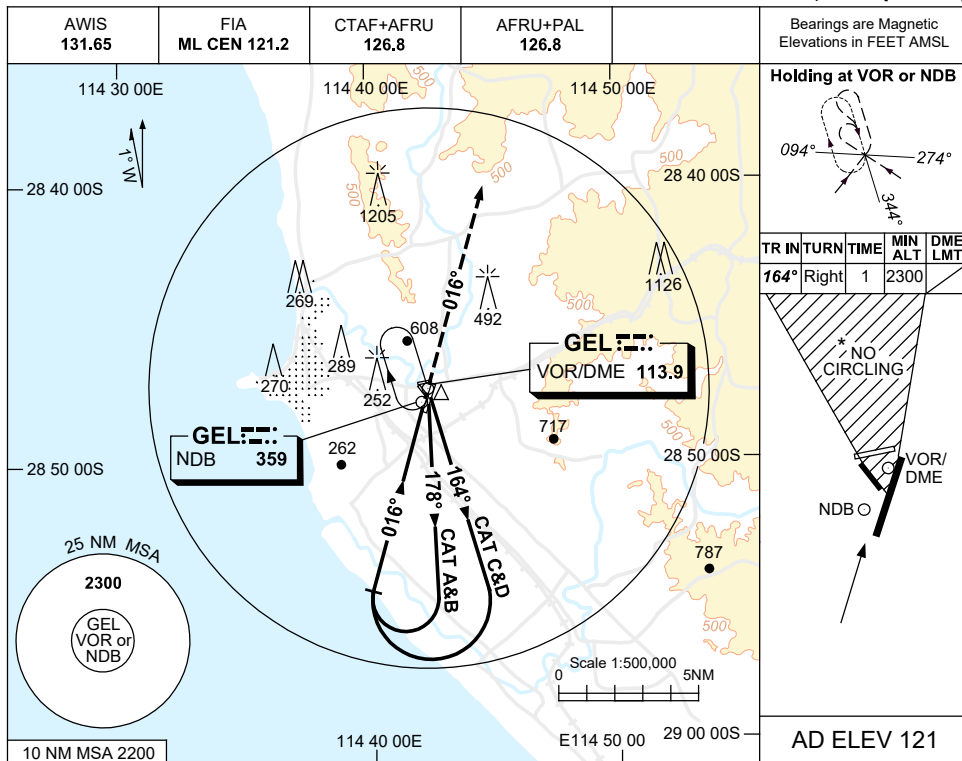


USE QNH

NDB-Y or VOR-Y RWY 03
GERALDTON, WA (YGEL)

1 DEC 2022



CATEGORY	A	B	C	D
S-I VORorNDB	800 (703-4.0)			
CIRCLING *	1190 (1069-2.4)	1290 (1169-4.0)	1420 (1299-5.0)	
ALTERNATE	(1569-4.4)	(1669-6.0)	(1799-7.0)	

- NOTES**
- MAX IAS: INITIAL ; 210KT.
 - NO CIRCLING IN SECTOR NORTH OF RWY 14 & RWY 21.
 - COLOUR: SEE SPEC NOTICES.

Changes: THR ELEV, Editorial.

GELNB02-173