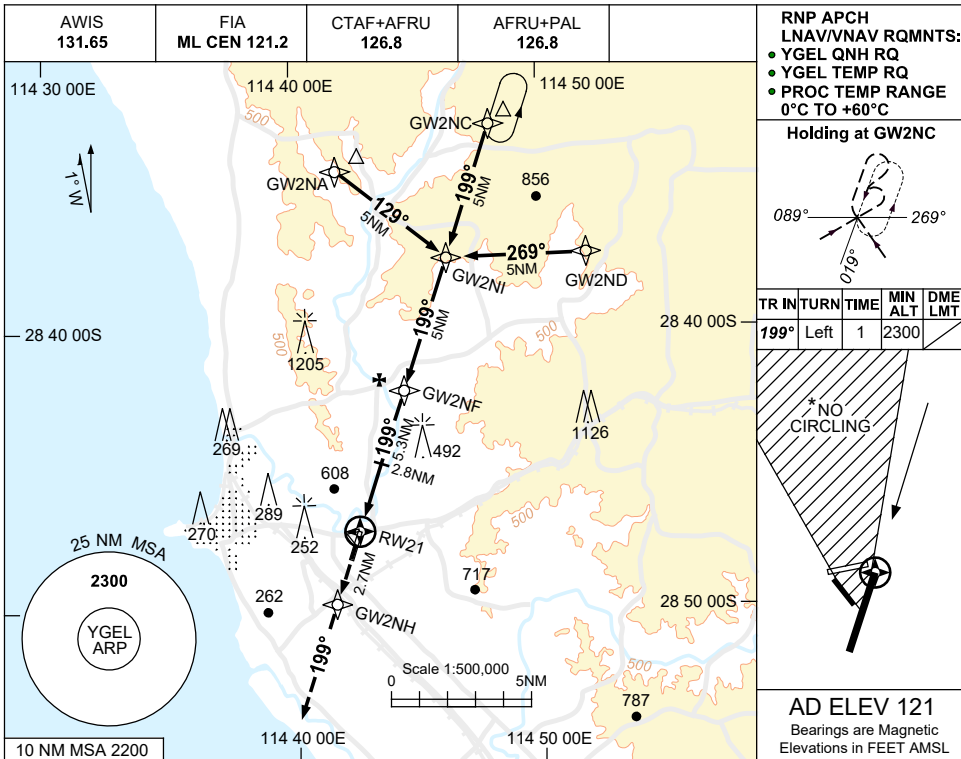


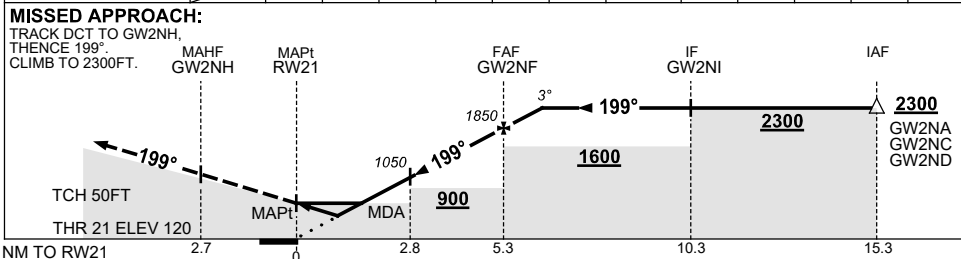
USE QNH

RNP RWY 21
GERALDTON, WA (YGEL)

7 SEP 2023



| NM TO NEXT WPT | RW21 | 1.2 | 1.8 | 2 | 2.8 | 3 | 4 | GW2NF | 1 | 1.5 | | | |
|--------------------|------|-----|-----|-----|------|------|------|-------|------|------|--|--|--|
| ALT (3° APCH PATH) | | 560 | 750 | 810 | 1050 | 1130 | 1440 | 1850 | 2160 | 2300 | | | |



| CATEGORY | A | B | C | D |
|------------|------------------------|---|---|---|
| LNAV/VNAV | 560 (440-2.5) | | | |
| LNAV | 750 (629-3.6) | | | |
| CIRCLING * | 1190 (1069-2.4) | | 1290 (1169-4.0) 1420 (1299-5.0) | |
| ALTERNATE | (1569-4.4) | | (1669-6.0) (1799-7.0) | |

- NOTES**
- MAX IAS:
INITIAL : 210KT.
 - NO CIRCLING IN SECTOR NORTH OF RWY 14 & RWY 21.
 - COLOUR: SEE SPEC NOTICES.

Changes: CHART TITLE, PBN SPECIFICATION BOX, Editorial. GELGN02-176