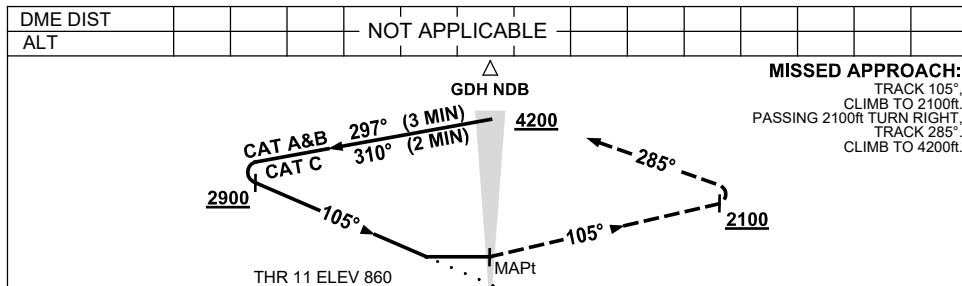
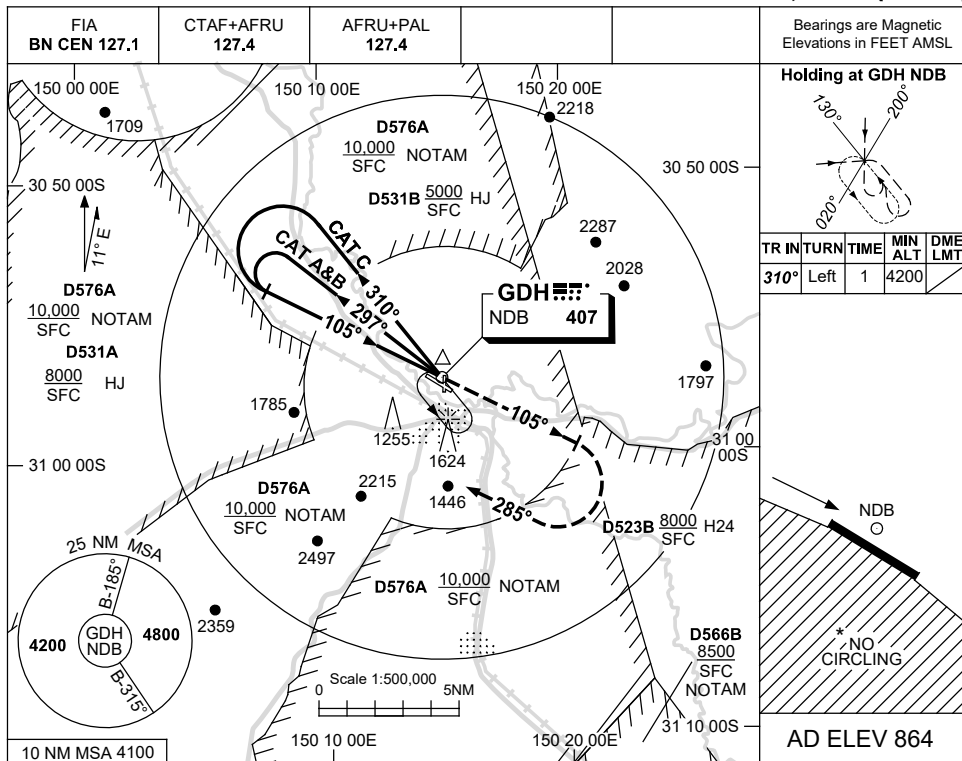


USE QNH

NDB RWY 11
GUNNEDAH, NSW (YGDH)

21 MAR 2024



MISSED APPROACH:
 TRACK 105°, CLIMB TO 2100ft.
 PASSING 2100ft TURN RIGHT, TRACK 285°, CLIMB TO 4200ft.

NOTES

- 1. MAX IAS:
INITIAL :
CAT C 210KT.
HOLDING: 160KT.
- * 2. NO CIRCLING SOUTH OF RWY 11/29.
- 3. AWIS (PHONE)
02 9353 6425

CATEGORY	A	B	C	D
S-I NDB	1770 (906-5.0)			NOT APPLICABLE
CIRCLING*	1770 (906-2.4)	1800 (936-4.0)		
ALTERNATE	(1406-4.4)		(1436-6.0)	

Changes: D576A, D566B, D523B, D531A & D531B ADDED, Editorial.

GDHNB01-178