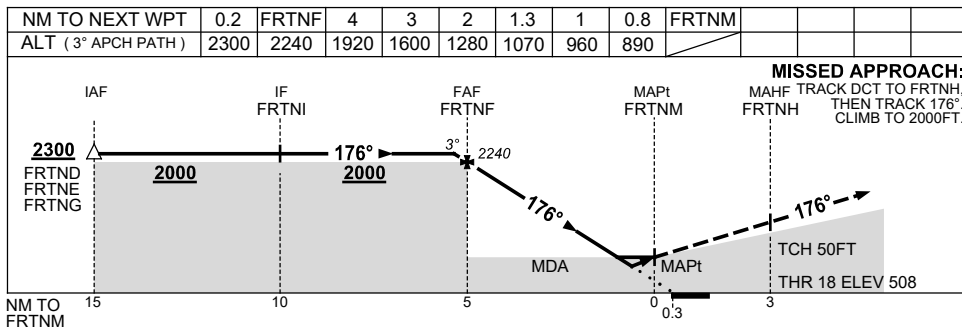
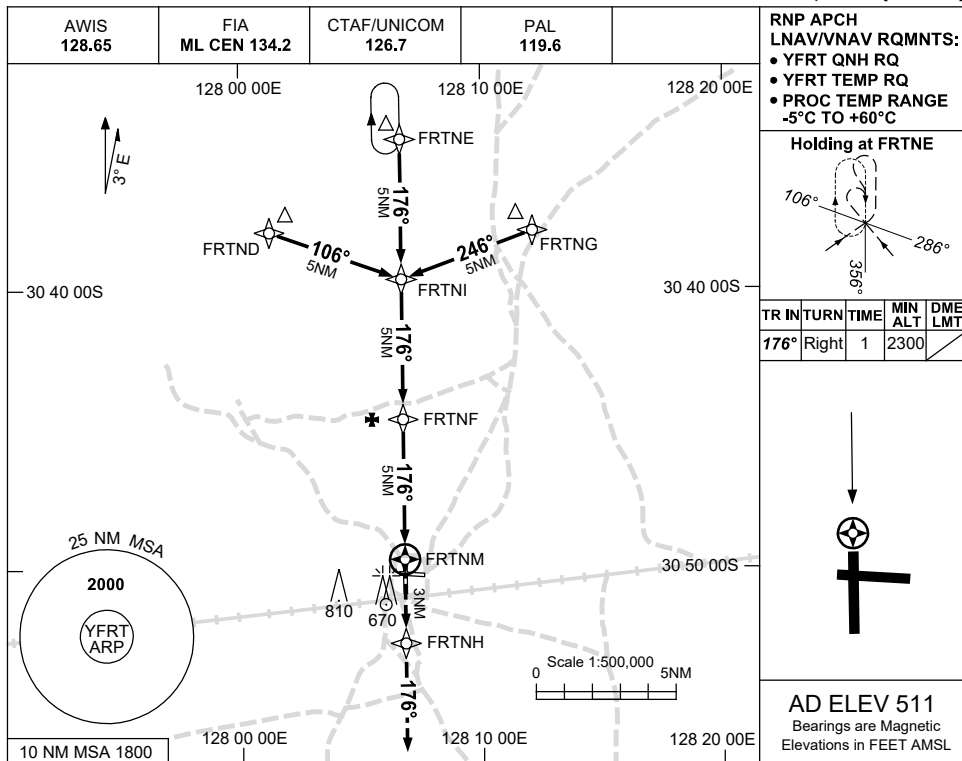


USE QNH

RNP RWY 18
FORREST, WA (YFRT)

30 NOV 2023



MISSED APPROACH:
 MAHF TRACK DCT TO FRTNH,
 THEN TRACK 176°,
 CLIMB TO 2000FT.

NOTES

CATEGORY	A	B	C	D
LNAV/VNAV	890 (382-2.1)			
LNAV	1070 (559-3.2)			
CIRCLING	1210 (699-2.4)	1310 (799-4.0)	1310 (799-5.0)	
ALTERNATE	(1199-4.4)	(1299-6.0)	(1299-7.0)	

1. MAX IAS:
 INITIAL : 210KT.

Changes: LNAV/VNAV MINIMA, THR ELEV.

FRTGN01-177