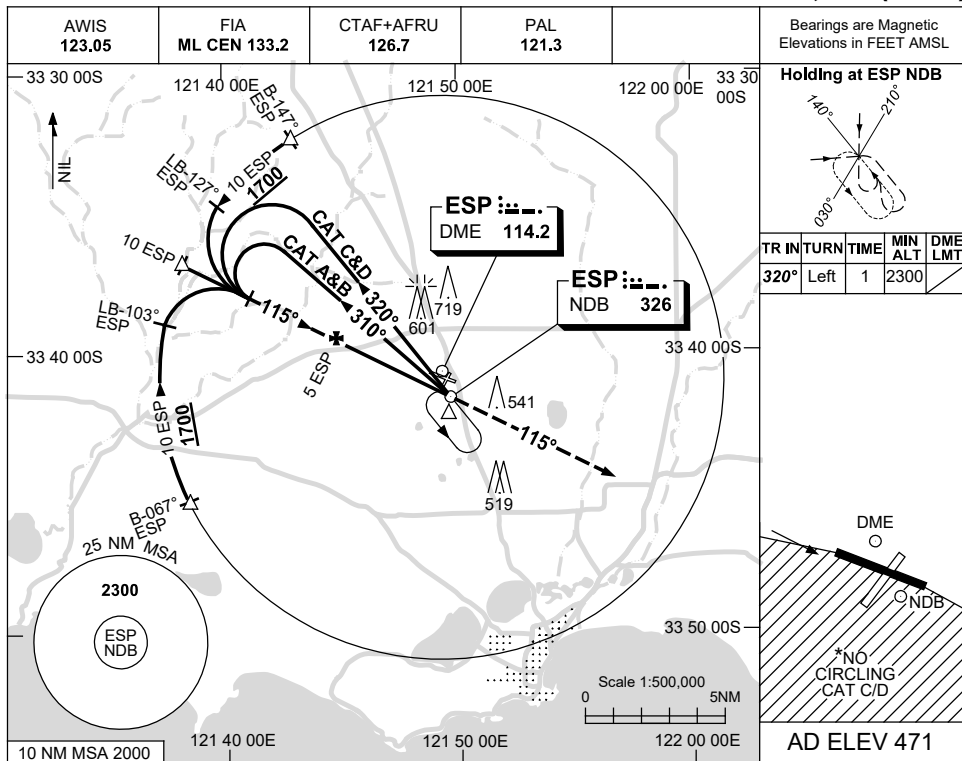


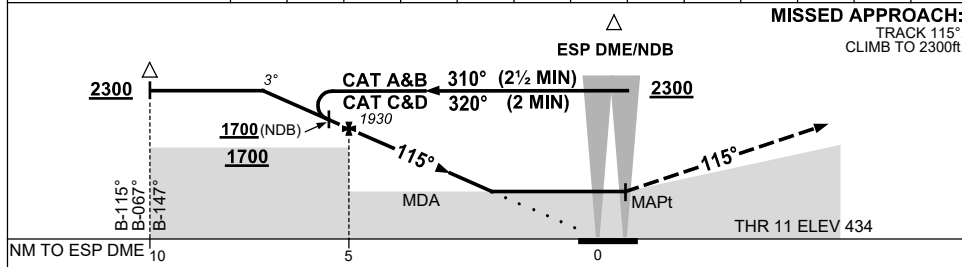
USE QNH

NDB RWY 11
ESPERANCE, WA (YESP)

21 MAR 2024



DIST BY DME	6.2	6	5	4	3	2				
ALT (3° APCH PATH)	2300	2250	1930	1610	1300	990				



NOTES

CATEGORY	A	B	C	D
S-I NDB		1040 (606-3.4)		
S-I NDB/DME		990 (556-3.1)		
CIRCLING *	1120 (649-2.4)		1230 (759-4.0)	1260 (789-5.0)
ALTERNATE	(1149-4.4)		(1259-6.0)	(1289-7.0)

1. MAX IAS:
INITIAL : 210KT.
 *2. NO CIRCLING CAT C/D
 STH OF RWY 11/29.

Changes: CAT C CIRCLING, MAG VAR, Editorial. ESPNO1- 178