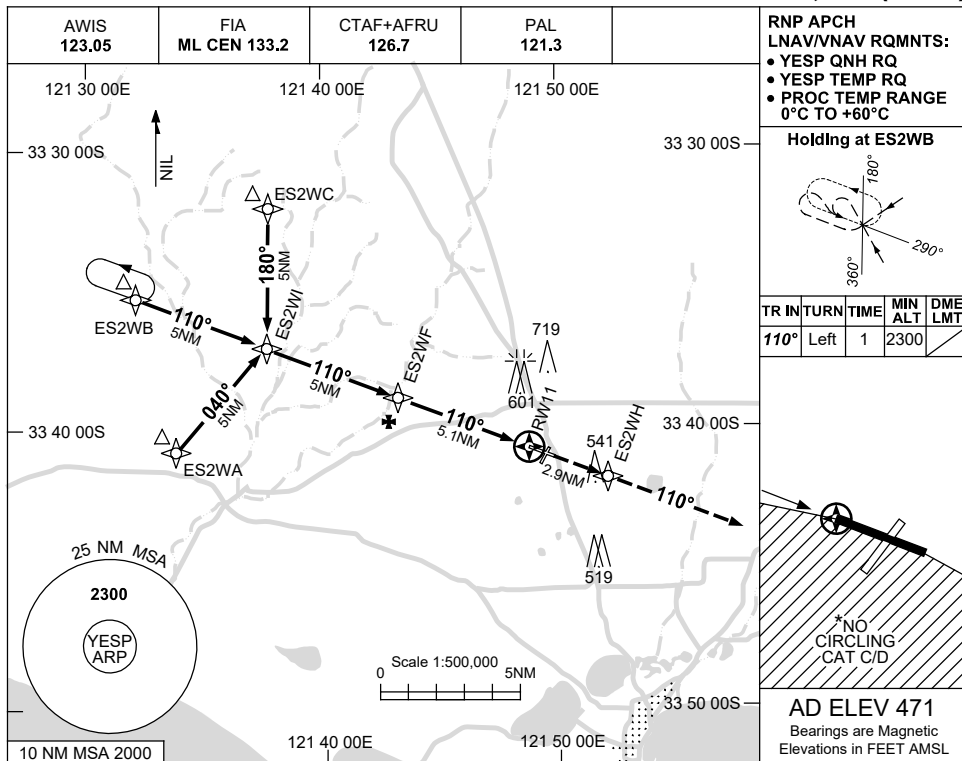


USE QNH

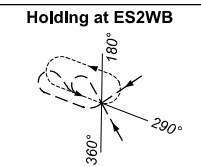
RNP RWY 11

ESPERANCE, WA (YESP)

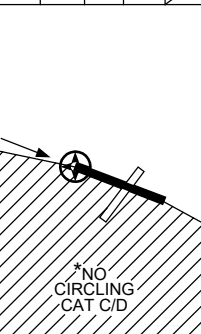
21 MAR 2024



RNP APCH
LNAV/VNAV RQMTS:
• YESP QNH RQ
• YESP TEMP RQ
• PROC TEMP RANGE
0°C TO +60°C

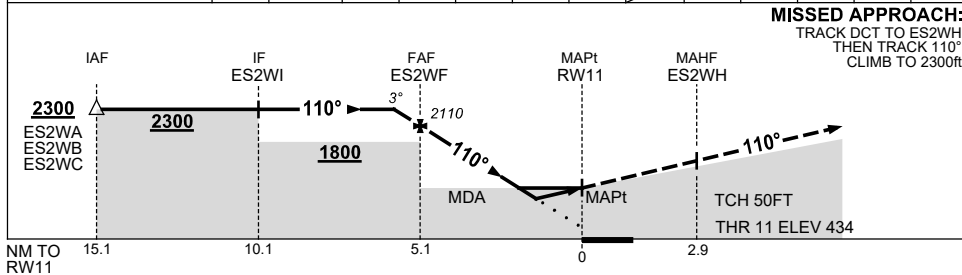


TR	IN	TURN	TIME	MIN	DME
				ALT	LMT
110°	Left	1	2300		



AD ELEV 471
Bearings are Magnetic
Elevations in FEET AMSL

NM TO NEXT WPT	0.6	ES2WF	4	3	2	1.6	1	RW11
ALT (3° APCH PATH)	2300	2110	1760	1440	1120	990	810	



MISSED APPROACH:
TRACK DCT TO ES2WH,
THEN TRACK 110°.
CLIMB TO 2300ft.

NOTES

CATEGORY	A	B	C	D
LNAV/VNAV		810 (376-2.1)		
LNAV		990 (556-3.2)		
CIRCLING*	1120 (649-2.4)		1230 (759-4.0)	1260 (789-5.0)
ALTERNATE	(1149-4.4)		(1259-6.0)	(1289-7.0)

- MAX IAS:
INITIAL : 210KT.
- NO CIRCLING CAT C/D
STH OF RWY 11/29.

Changes: CAT C CIRCLING, MAG VAR, Editorial.

ESPGN01-178