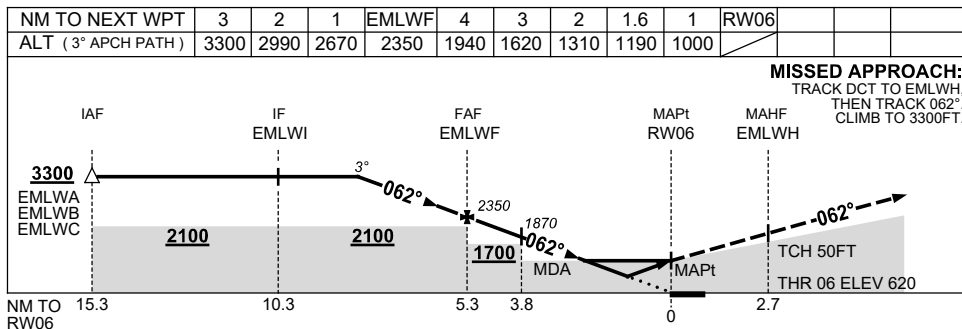
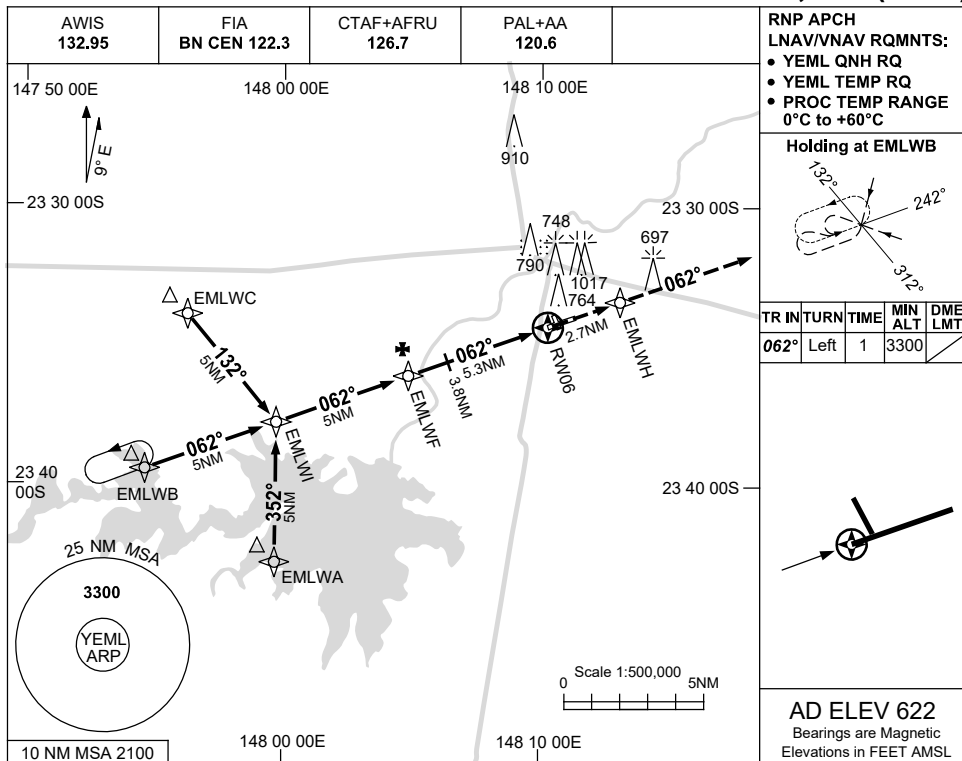


USE QNH

RNP RWY 06

16 JUN 2022

EMERALD, QLD (YEML)



NOTES

- MAX IAS :
HOLDING : 210KT.
INITIAL : 210KT.

CATEGORY	A	B	C	D
LNAV/VNAV	1000 (380-2.1)			
LNAV	1190 (570-3.2)			
CIRCLING	1420 (798-2.4)	1520 (898-4.0)	1520 (898-5.0)	
ALTERNATE	(1298-4.4)	(1398-6.0)	(1398-7.0)	

Changes: CHART TITLE, PBN SPECIFICATION BOX, PAL+AA.

EMLGN01-171