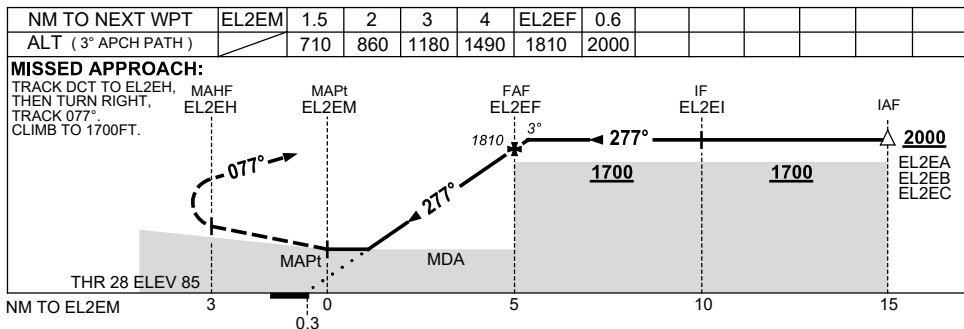
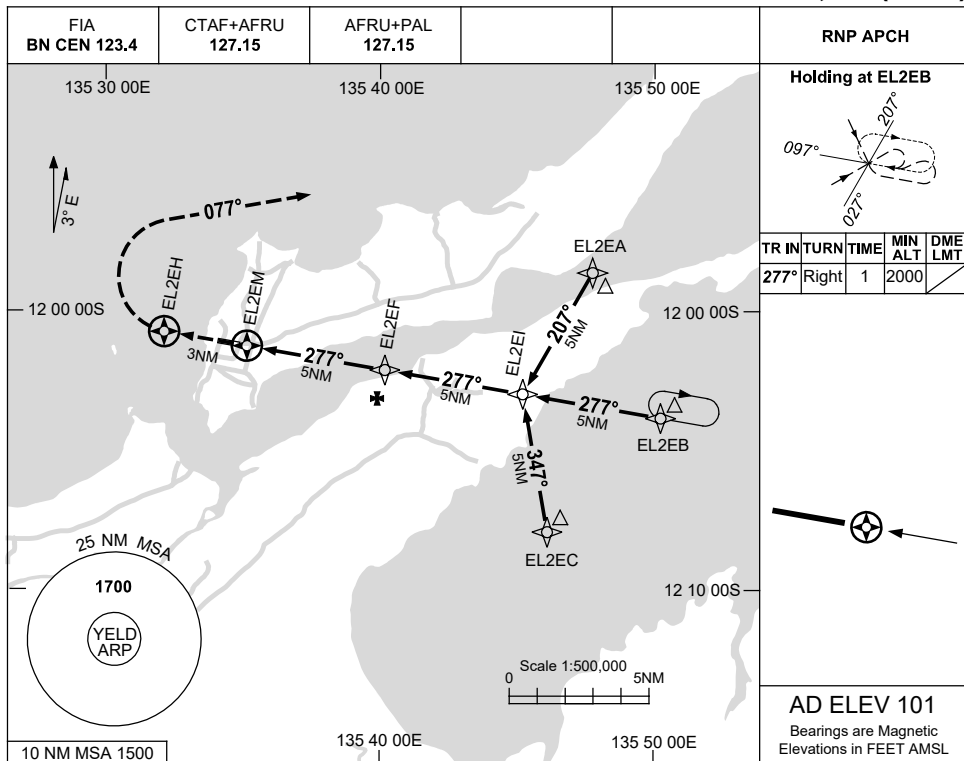


USE QNH

RNP RWY 28

8 SEP 2022

ELCHO ISLAND, NT (YELD)



**NOTES**

- 1. MAX IAS: INITIAL : 210KT.

CATEGORY	A	B	C	D
LNAV	<b>710</b> (625-3.6)			<b>NOT APPLICABLE</b>
CIRCLING	<b>710</b> (609-2.4)	<b>800</b> (699-4.0)		
ALTERNATE	(1109-4.4)		(1199-6.0)	

Changes: CHART TITLE, PBN SPECIFICATION BOX.

ELDGN02-172

