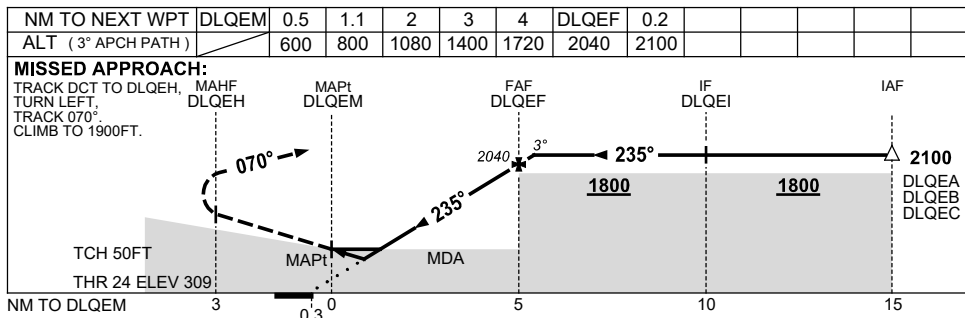
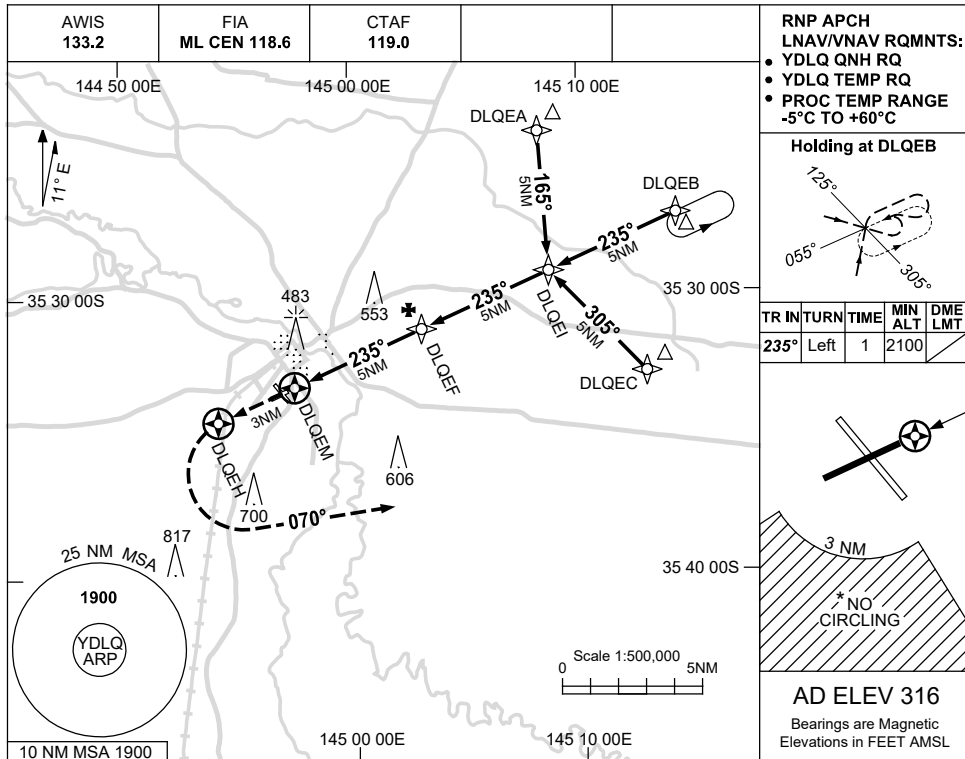


USE QNH

RNP RWY 24  
DENILQUIN, NSW (YDLQ)

15 JUN 2023



**NOTES**

CATEGORY	A	B	C	D
LNAV/VNAV	600 (291-1.6)			<b>NOT APPLICABLE</b>
LNAV	800 (484-2.7)			
CIRCLING *	910 (594-2.4)		1060 (744-4.0)	
ALTERNATE	(1094-4.4)		(1244-6.0)	

1. MAX IAS: INITIAL : 210KT.  
\*2. NO CIRCLING S OF RWY 06 & RWY 30 BEYOND 3NM.

Changes: CHART TITLE, PBN SPECIFICATION BOX, Editorial. DLQGN02-175