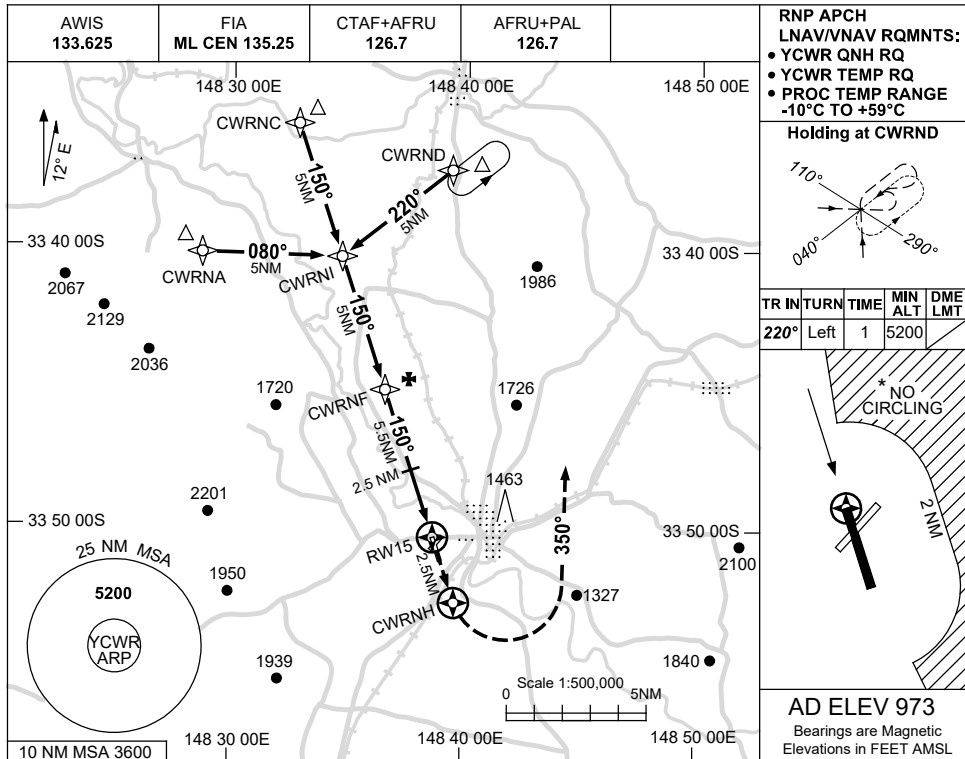


USE QNH

RNP RWY 15
COWRA, NSW (YCWR)

21 MAR 2024

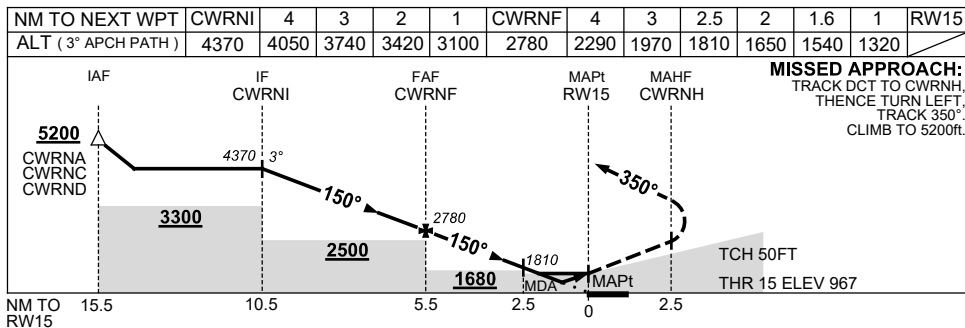


RNP APCH
LNAV/VNAV RQMNTS:
 • YCWR QNH RQ
 • YCWR TEMP RQ
 • PROC TEMP RANGE -10°C TO +59°C

Holding at CWRND

TR	IN	TURN	TIME	MIN ALT	DME LMT
220°	Left	1		5200	

AD ELEV 973
 Bearings are Magnetic
 Elevations in FEET AMSL



NOTES

CATEGORY	A	B	C	D
LNAV/VNAV		1320 (353-2.0)		NOT APPLICABLE
LNAV		1540 (567-3.2)		
CIRCLING *	1650 (677-2.4)		1810 (837-4.0)	
ALTERNATE	(1177-4.4)		(1337-6.0)	

- MAX IAS: INITIAL : 210KT.
- *2. NO CIRCLING E OF RWY 15/33 BEYOND 2NM.

Changes: MODEL ACFT SYMBOL REMOVED, Editorial.

CWRGN01-178