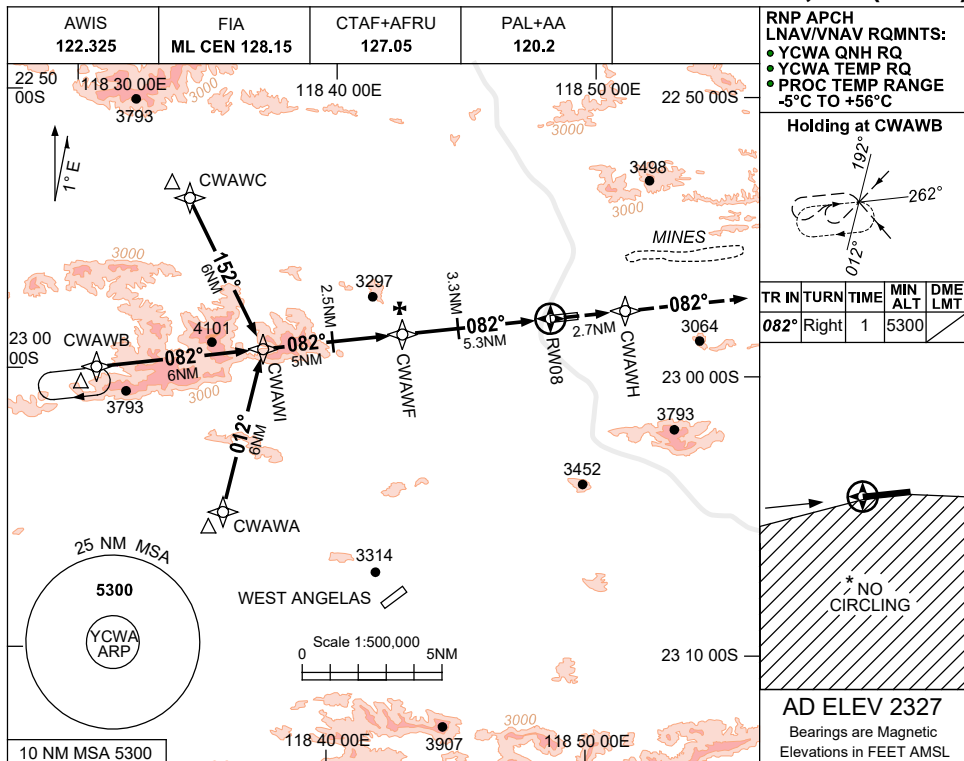


USE QNH

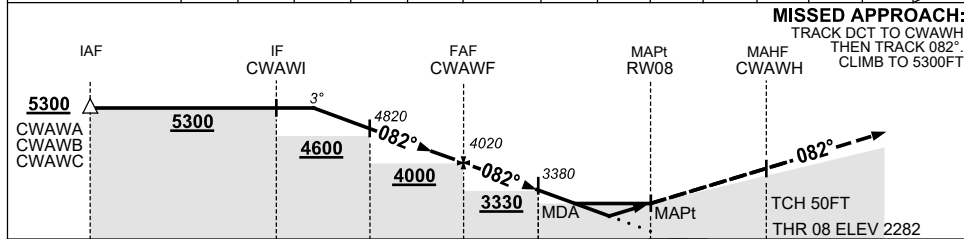
RNP RWY 08

30 NOV 2023

COONDEWANNA, WA (YCWA)



| | | | | | | | | | | | | | | |
|--------------------|------|------|------|------|------|-------|------|------|------|------|------|------|------|------|
| NM TO NEXT WPT | 4 | 3 | 2.5 | 2 | 1 | CWAWF | 5 | 4 | 3.3 | 3 | 2 | 1.9 | 1.2 | RW08 |
| ALT (3° APCH PATH) | 5300 | 4970 | 4820 | 4660 | 4340 | CWAWF | 4020 | 3920 | 3610 | 3380 | 3290 | 2970 | 2940 | 2710 |



1. MAX IAS:
INITIAL : 230KT.
- *2. NO CIRCLING SOUTH OF RWY 08/26.
3. BLASTING OPS (SEE ERSA)
4. APCH PATH ANGLE DOES NOT COINCIDE WITH PAPI ON GLIDE SLOPE INDICATION.
5. COLOUR: SEE SPEC NOTICES.

| CATEGORY | A | B | C | D |
|------------|-----------------|----------------|-----------------|-----------------|
| LNAV/VNAV | | 2710 (428-2.4) | | |
| LNAV | | 2940 (658-3.7) | | |
| CIRCLING * | 3340 (1013-2.4) | | 3700 (1373-4.0) | 4160 (1833-5.0) |
| ALTERNATE | (1513-4.4) | | (1873-6.0) | (2333-7.0) |

Changes: CHART TITLE, PBN SPECIFICATION BOX, Editorial.

CWAGN01-177