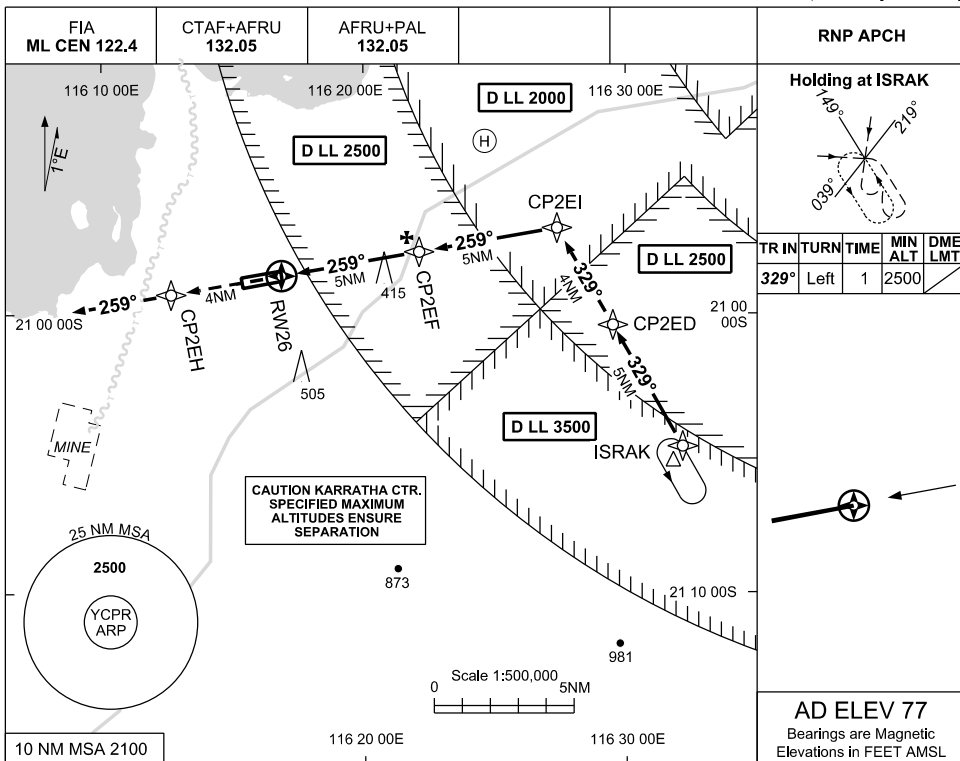


USE QNH

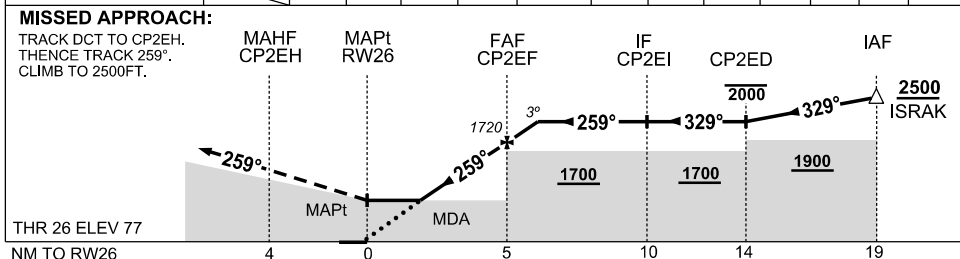
RNP RWY 26

30 NOV 2023

CAPE PRESTON, WA (YCPR)



NM TO NEXT WPT	RW26	1.5	2	3	4	CP2EF	0.9				
ALT (3° APCH PATH)		610	760	1080	1400	1720	2000				



**NOTES**

- MAX IAS :  
INITIAL: 210KT  
HOLDING: 210KT
- PROC OVERLAID BY KARRATHA CLASS D AIRSPACE . CLR RQ TO ENTER CTA
- HEL OPS 9NM ENE ARP (DEVILS CREEK)

CATEGORY	A	B	C	D
LNAV	610 (533-2.8)			NOT AUTHORISED
CIRCLING	850 (773-2.4)		1050(973-4.0)	
ALTERNATE	(1273-4.4)		(1473-6.0)	

Changes: CHART TITLE, WPT IDENT, EDITORIAL

CPRGN02-177

