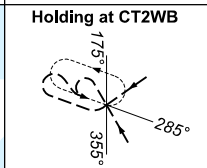
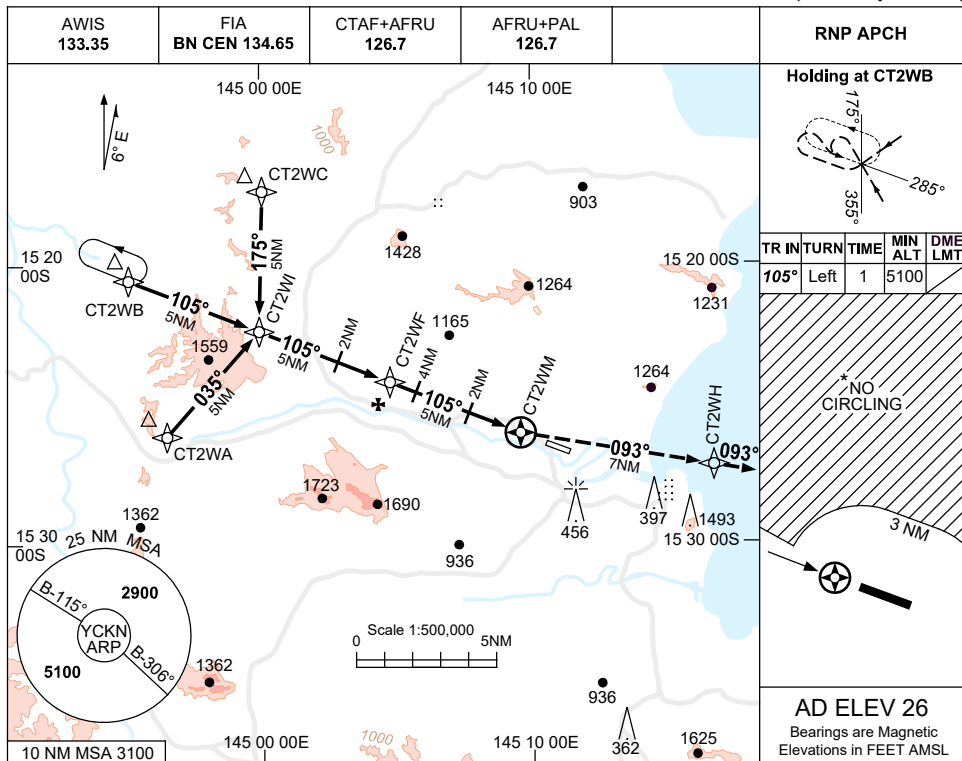


USE QNH

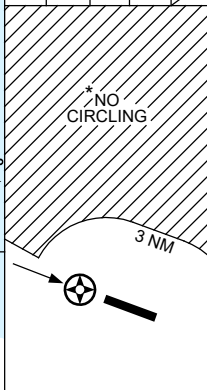
RNP RWY 11

1 DEC 2022

COOKTOWN, QLD (YCKN)

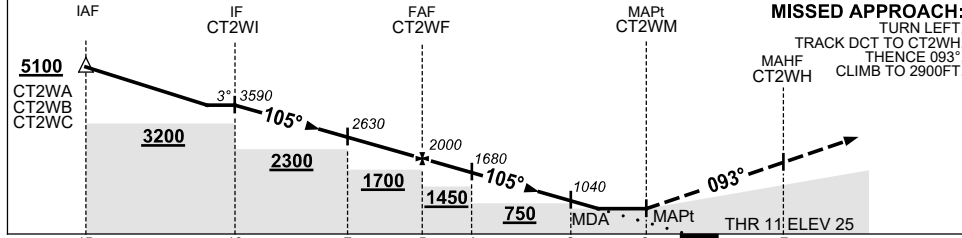


TR	IN	TURN	TIME	MIN ALT	DME LMT
105°	Left	1	5100		



**AD ELEV 26**  
Bearings are Magnetic  
Elevations in FEET AMSL

NM TO NEXT WPT	CT2WI	4	3	2	1	CT2WF	4	3	2	1	0.9	0.6	CT2WM		
ALT(3° APCH PATH)	3590	3270	2950	2630	2310	2000	1680	1360	1040	720	700	600			



**MISSED APPROACH:**  
TURN LEFT,  
TRACK DCT TO CT2WH,  
THENCE 093°,  
CLIMB TO 2900FT.

**NOTES**

- MAX IAS: INITIAL : 210KT.
- NO CIRCLING IN SECTOR NORTHWEST OF RWY 11 & RWY 29 BEYOND 3NM.
- MIN MAP GRAD 3.1% TO 1100FT, THEN 2.5%.
- COLOUR: SEE SPEC NOTICES.

CATEGORY	A	B	C	D
LNAV (2.5% MAP)	700 (674-3.8)			NOT APPLICABLE
LNAV (3.1% MAP)#	600 (574-3.2)			
CIRCLING *	1080 (1054-2.4)		1500(1474-4.0)	
ALTERNATE	(1554-4.4)		(1974-6.0)	

Changes: DIST/ALT TABLE.

CKNGN01-173