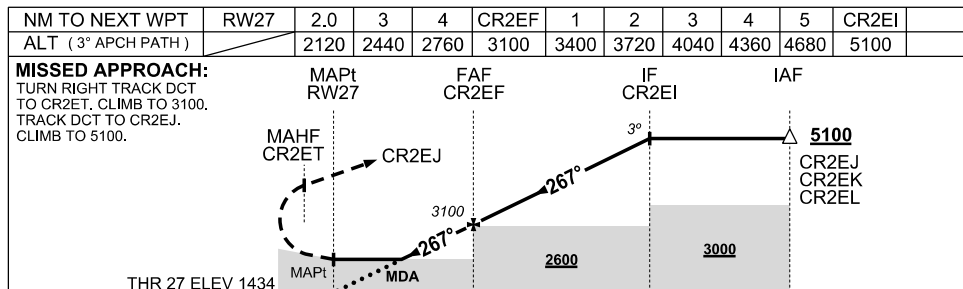
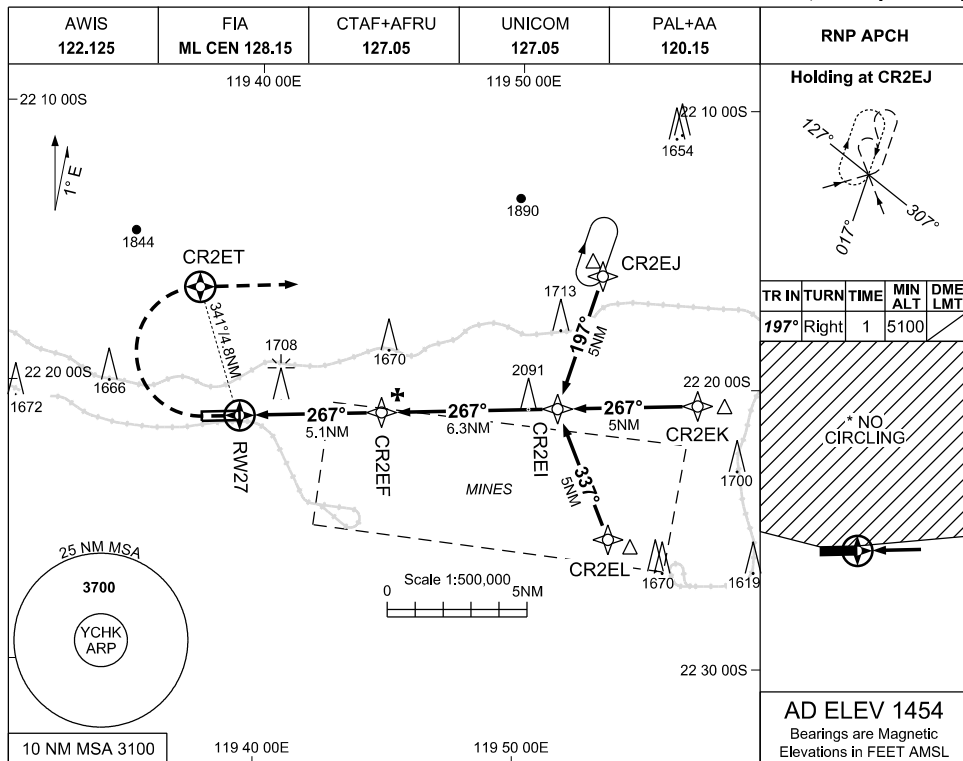


USE QNH

RNP RWY 27

30 NOV 2023

CHRISTMAS CREEK, WA (YCHK)



1. MAX IAS: 210KT
INITIAL: 210KT
MAP TURN: 195KT
HOLDING: 210KT
CAT D
CIRCLING: 185KT
2. NO CIRCLING N OF RWY 09/27.
3. **CAUTION:** PROC OVERLAI BY PROCS AT YDF. AIRCRAFT SEPARATION IS NOT ASSURED.

CATEGORY	A	B	C	D
LNAV	2120 (686-3.9)			
* CIRCLING	2140(686-2.4)	2260 (806-4.0)	2260 (806-5.0)	
ALTERNATE	(1186-4.4)	(1306-6.0)	(1306-7.0)	

Changes: CHART TITLE, EDITORIAL

CHKGN02-177

