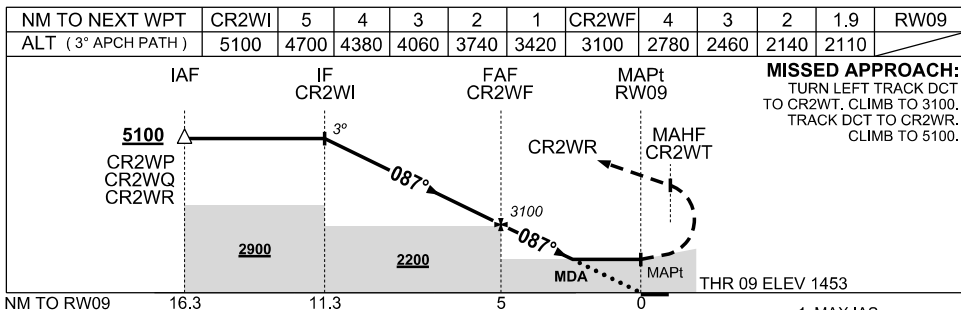
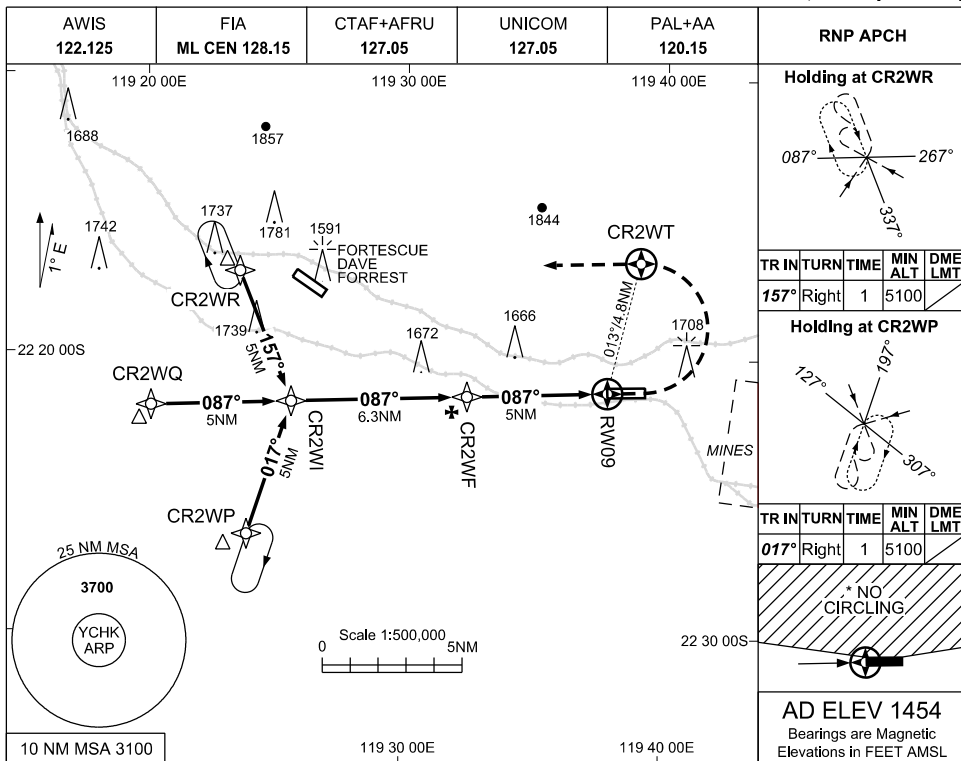


USE QNH

RNP RWY 09

30 NOV 2023

CHRISTMAS CREEK, WA (YCHK)



CATEGORY	A	B	C	D
LNAV	<b>2110 (656-3.7)</b>			
* CIRCLING	<b>2140 (686-2.4)</b>		<b>2260 (806-4.0)</b>	
ALTERNATE	(1186-4.4)		(1306-7.0)	

- NOTES**
- MAX IAS: 210KT  
INITIAL: 210KT  
MAP TURN: 195KT  
HOLDING: 210KT  
CAT D  
CIRCLING: 185KT
  - NO CIRCLING N OF RWY 09/27.
  - CAUTION:** PROC OVERLAID BY PROCS AT YDF. AIRCRAFT SEPARATION IS NOT ASSURED.

Changes: CHART TITLE, EDITORIAL

CHKGN01-177