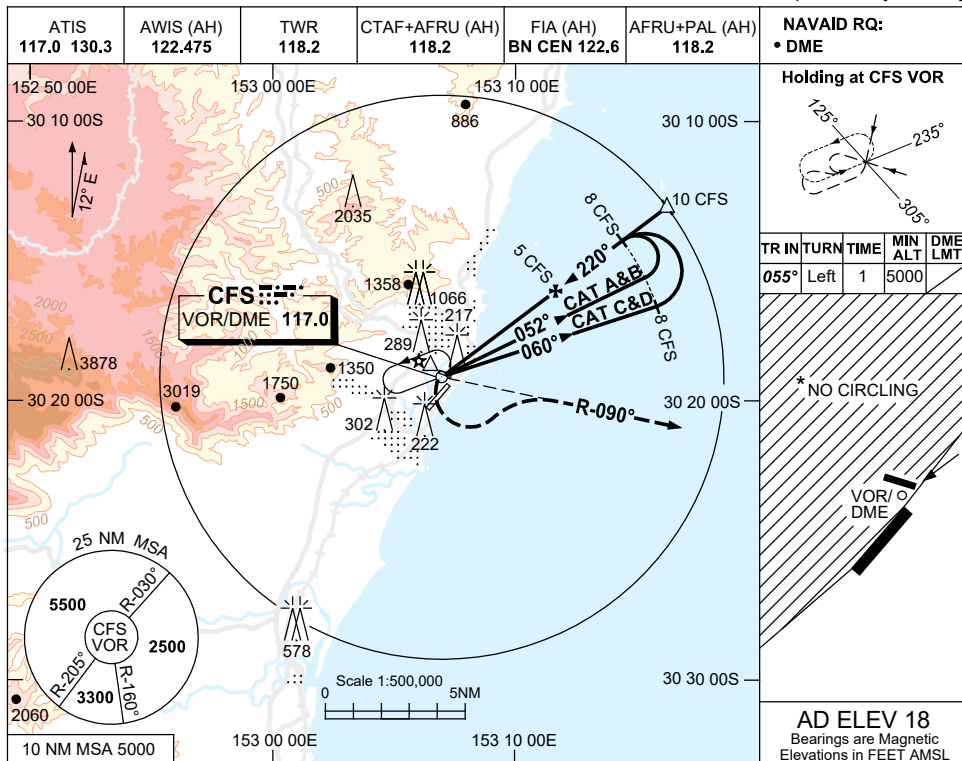


USE QNH

VOR-Z RWY 21

27 FEB 2020

**COFFS HARBOUR, NSW (YCFS)**

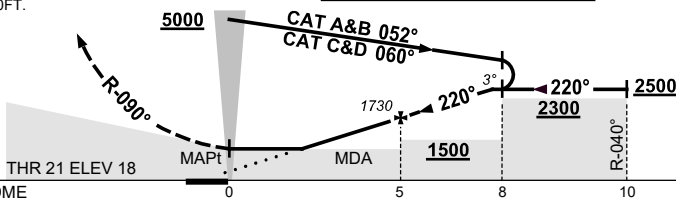


|                    |     |     |      |      |      |      |      |      |      |      |  |  |  |
|--------------------|-----|-----|------|------|------|------|------|------|------|------|--|--|--|
| DIST TO CFS DME    | 1.8 | 2   | 3    | 4    | 5    | 6    | 7    | 8    | 9    | 10   |  |  |  |
| ALT (3° APCH PATH) | 680 | 770 | 1090 | 1410 | 1730 | 2040 | 2360 | 2680 | 3000 | 3320 |  |  |  |

**MISSED APPROACH:**

TURN LEFT.  
INTERCEPT R-090°.  
CLIMB TO 2500FT.

GNSS permitted in lieu of DME  
Reference waypoint CFS VOR



**NOTES**

- MAX IAS:  
INITIAL : 190KT.  
MAP TURN: 190KT.  
HOLDING : 210KT.
- NO CIRCLING WEST OF RWY 03/21.
- COLOUR: SEE SPEC NOTICES.

**CAUTION**

DISUSED RWY (TWY E)  
NTH OF RWY 21 THR.

| CATEGORY    | A                    | B | C                    | D |
|-------------|----------------------|---|----------------------|---|
| S-I VOR/DME | <b>680 (662-3.8)</b> |   |                      |   |
| CIRCLING *  | <b>800 (782-2.4)</b> |   | <b>890 (872-4.0)</b> |   |
| ALTERNATE   | (1282-4.4)           |   | (1372-6.0)           |   |
|             |                      |   | (1372-7.0)           |   |

Changes: FROM SUP H85/19, COORD FMT.

CFSV003-162