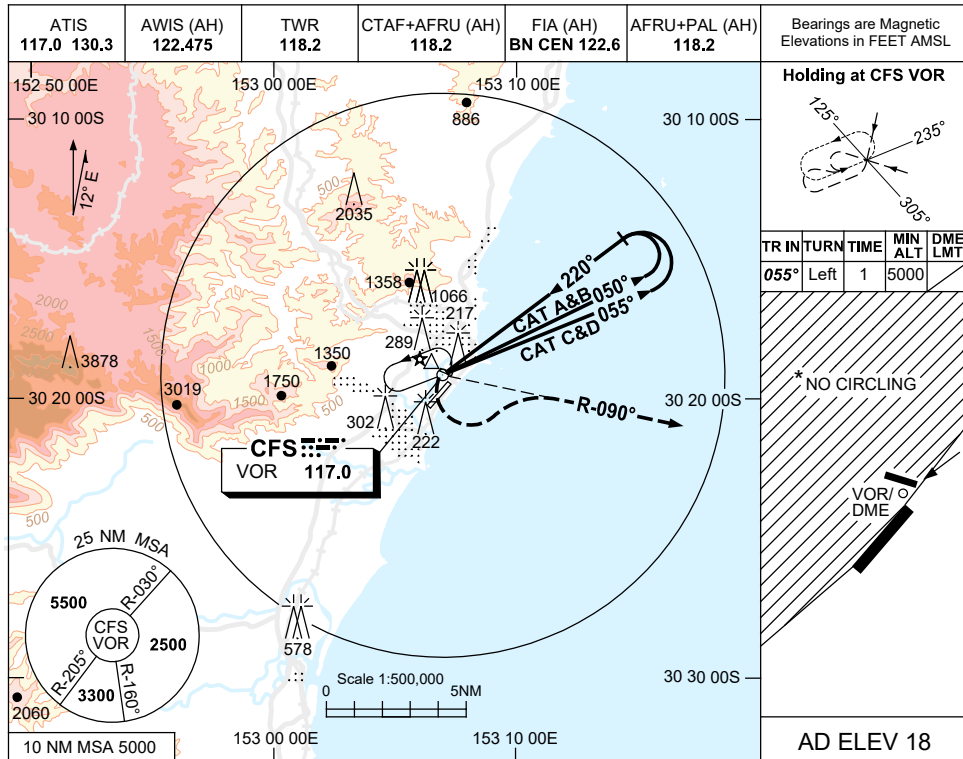


USE QNH

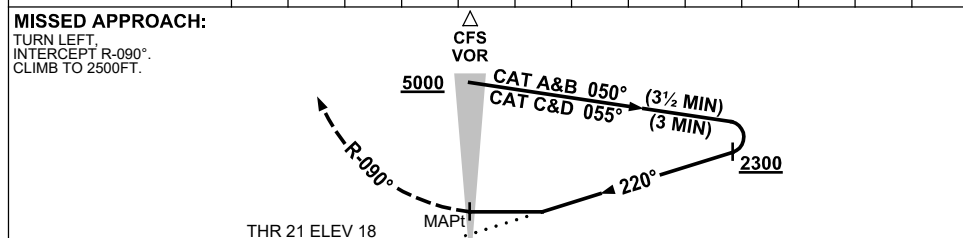
VOR-Y RWY 21

27 FEB 2020

**COFFS HARBOUR, NSW (YCFS)**



DIST TO CFS DME			NOT APPLICABLE
ALT			



**NOTES**

1. MAX IAS: : 190KT.  
INITIAL : 190KT.  
MAP TURN: 190KT.  
HOLDING : 210KT.
- \* 2. NO CIRCLING  
WEST OF RWY 03/21.
3. COLOUR: SEE  
SPEC NOTICES.

**CAUTION**

DISUSED RWY (TWY E)  
NTH OF RWY 21 THR.

CATEGORY	A	B	C	D
S-I VOR	<b>800 (782-4.5)</b>			
CIRCLING *	<b>800 (782-2.4)</b>	<b>890 (872-4.0)</b>	<b>890 (872-5.0)</b>	
ALTERNATE	(1282-4.4)	(1372-6.0)	(1372-7.0)	

Changes: FROM SUP H85/19, COORD FMT.

CFSV002-162