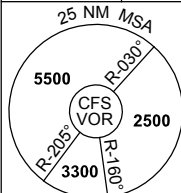


DME or GNSS ARRIVAL PROCEDURES COFFS HARBOUR, NSW (YCFS) Page 1

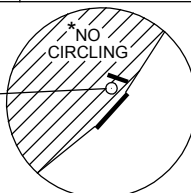
28 FEB 2019

ATIS 117.0 130.3	AWIS (AH) 122.475	TWR 118.2	CTAF+AFRU (AH) 118.2	FIA (AH) BN CEN 122.6	AFRU+PAL (AH) 118.2	Bearings are Magnetic Elevations in FEET AMSL
---------------------	----------------------	--------------	-------------------------	--------------------------	------------------------	--



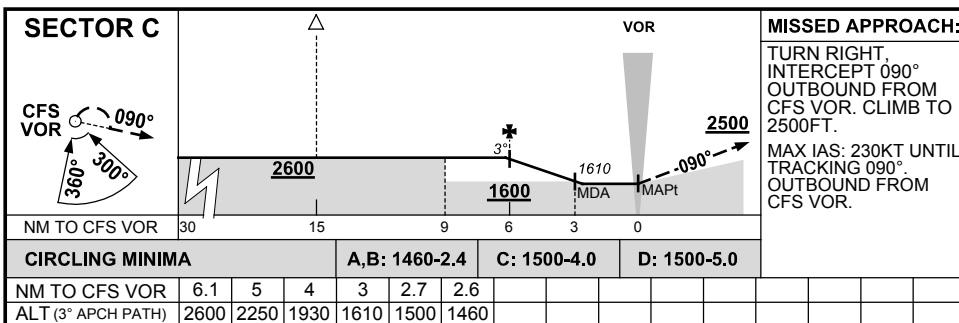
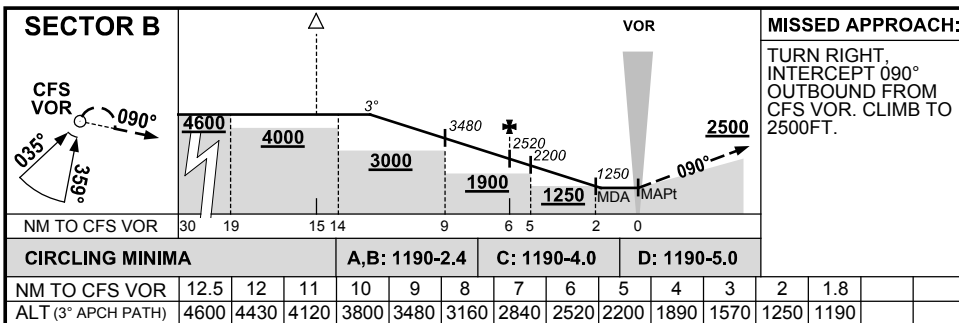
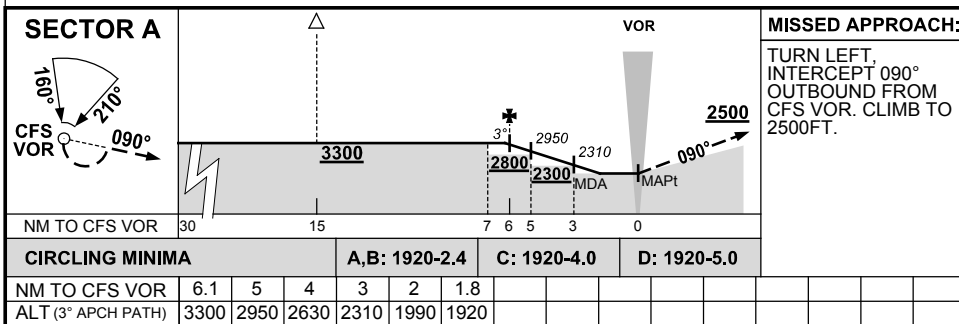
DME USING CFS DME REFERENCE WAYPOINT CFS VOR

CFS VOR/DME 117.0



* NO CIRCLING W
OF RWY 03/21.

AD ELEV 18



Changes: AWIS 122.475 CMSD, AWIS PH DELETED, Editorial.

CFSDG01-158