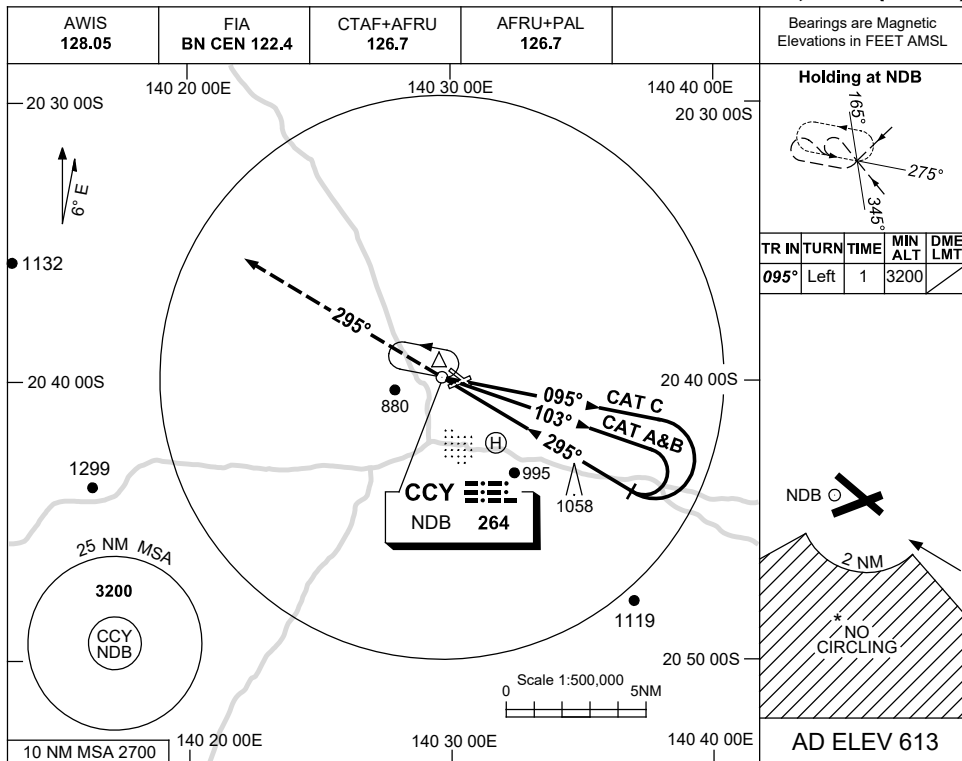


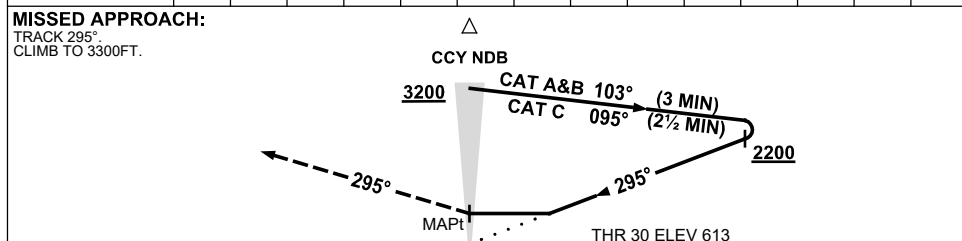
USE QNH

NDB RWY 30
CLONCURRY, QLD (YCCY)

17 JUN 2021



DME DIST					
ALT	NOT APPLICABLE				



NOTES

CATEGORY	A	B	C	D
S-I NDB	1570 (957-5.0)			NOT APPLICABLE
CIRCLING *	1570 (957-2.4)	1570 (957-4.0)		
ALTERNATE	(1457-4.4)	(1457-6.0)		

1. MAX IAS:
INITIAL : 210KT.
- *2. NO CIRCLING IN SECTOR SOUTH OF RWYS 06 AND 30 BEYOND 2NM.

Changes: COORD FMT, Editorial.

CCYNB02-167