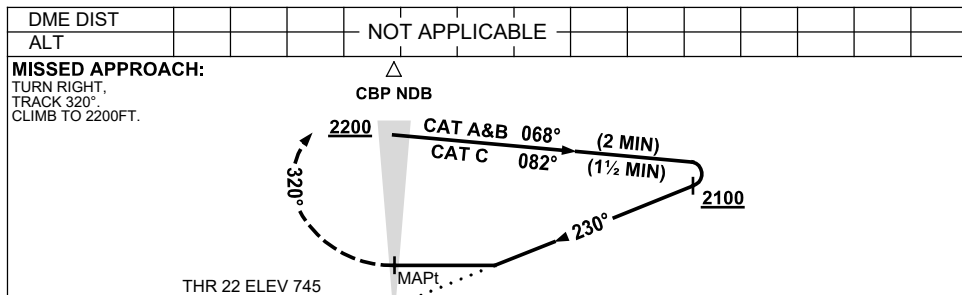
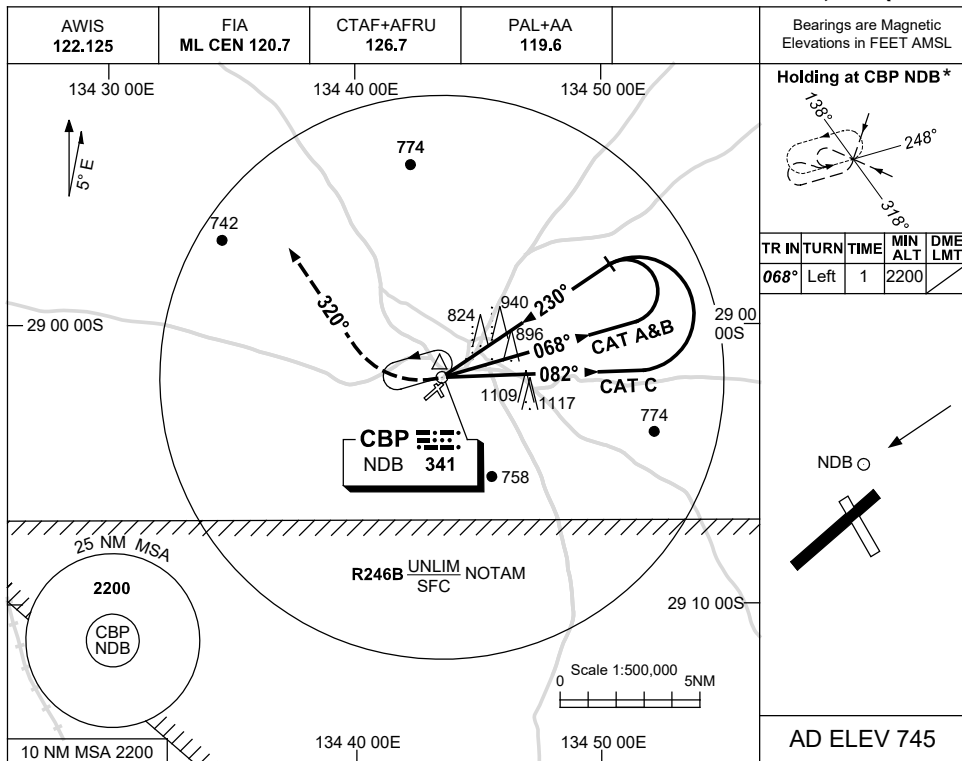


USE QNH

NDB RWY 22
COOBER PEDY, SA (YCPB)

16 JUN 2022



NOTES

CATEGORY	A	B	C	D
S-I NDB	1390 (645-3.7)			NOT APPLICABLE
CIRCLING	1390 (645-2.4)	1620 (875-4.0)		
ALTERNATE	(1145-4.4)	(1375-6.0)		

1. MAX IAS:
 INITIAL : 210KT
 HOLDING: 180KT.
- * 2. HOLDING NOT AVBL
 WHEN R246B ACTIVE.

Changes: MAG VAR, PAL+AA.

CBPNB01-171