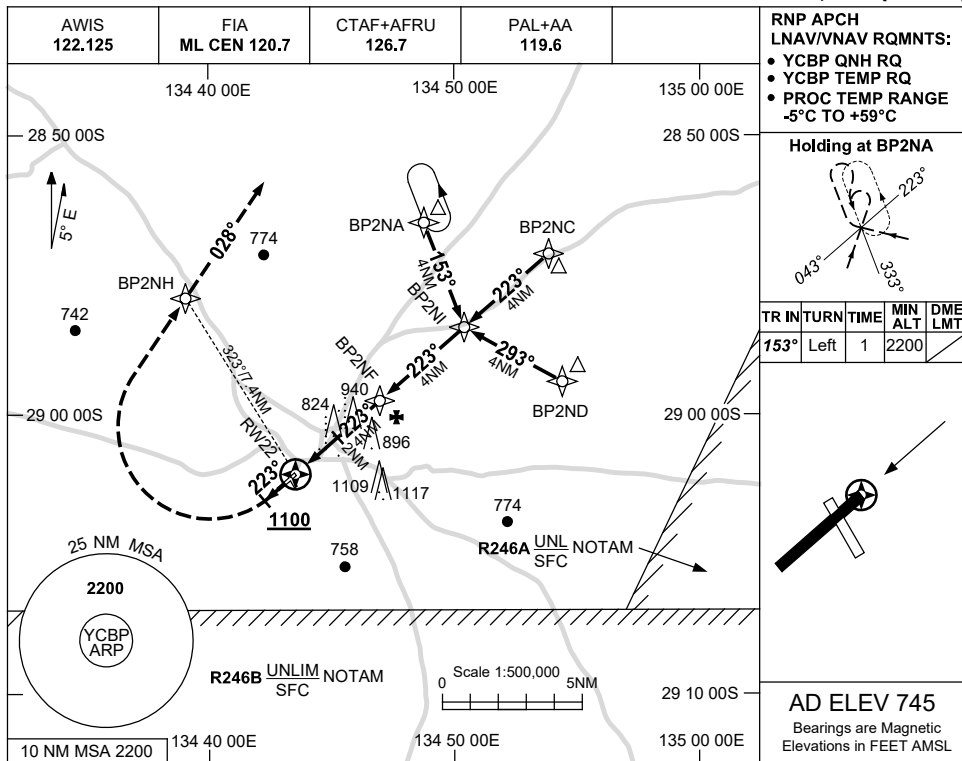


USE QNH

RNP RWY 22

COOBER PEDY, SA (YCBP)

1 DEC 2022



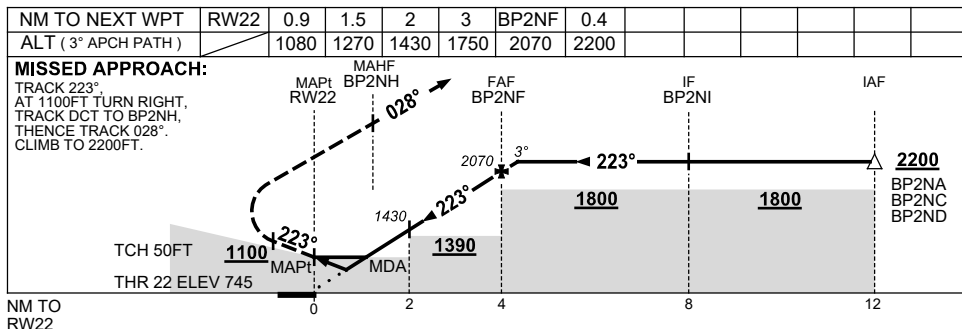
RNP APCH  
LNAV/VNAV RQMNTS:

- YCBP QNH RQ
- YCBP TEMP RQ
- PROC TEMP RANGE -5°C TO +59°C

**Holding at BP2NA**

TR IN	TURN	TIME	MIN ALT	DME LMT
153°	Left	1	2200	

**AD ELEV 745**  
Bearings are Magnetic  
Elevations in FEET AMSL



**NOTES**

1. MAX IAS:  
INITIAL : 210KT.

CATEGORY	A	B	C	D
LNAV/VNAV		1080 (335-1.9)		NOT APPLICABLE
LNAV		1270 (525-3.0)		
CIRCLING	1390 (645-2.4)		1620 (875-4.0)	
ALTERNATE	(1145-4.4)		(1375-6.0)	

Changes: CHART TITLE, PBN SPECIFICATION BOX.

CBPGN02-173