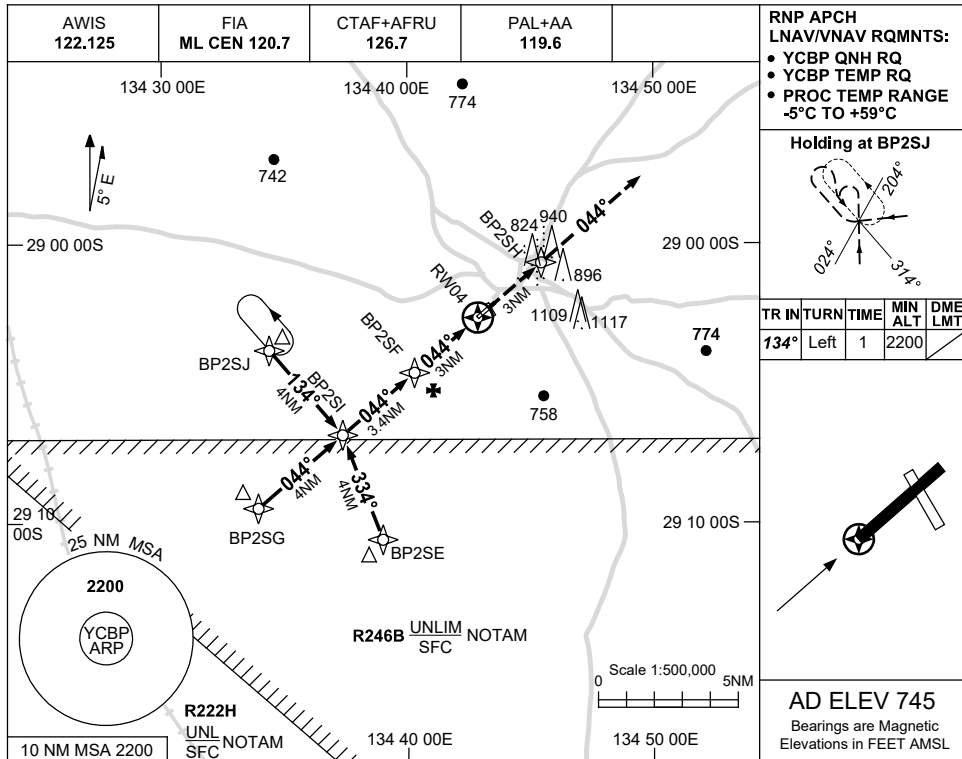


USE QNH

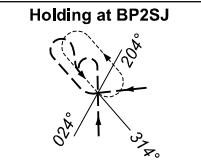
RNP RWY 04

1 DEC 2022

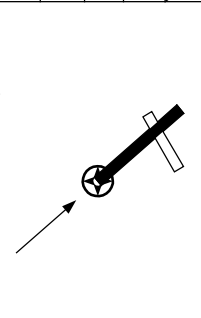
COOBER PEDY, SA (YCBP)



RNP APCH
LNAV/VNAV RQMTS:
• YCBP QNH RQ
• YCBP TEMP RQ
• PROC TEMP RANGE
-5°C TO +59°C

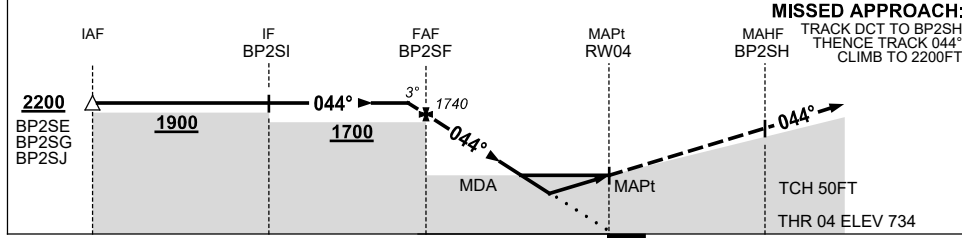


TR	IN	TURN	TIME	MIN ALT	DME LMT
134°	Left	1	2200		



AD ELEV 745
Bearings are Magnetic
Elevations in FEET AMSL

NM TO NEXT WPT	1.4	BP2SF	2	1.5	0.9	RW04				
ALT (3° APCH PATH)	2200	1740	1420	1270	1080					



MISSED APPROACH:
TRACK DCT TO BP2SH.
THENCE TRACK 044°.
CLIMB TO 2200FT.

NM TO RW04: 10.4, 6.4, 3, 0, 3

NOTES

CATEGORY	A	B	C	D
LNAV/VNAV		1080 (346-1.9)		NOT APPLICABLE
LNAV		1270 (536-3.0)		
CIRCLING	1390 (645-2.4)		1620 (875-4.0)	
ALTERNATE	(1145-4.4)		(1375-6.0)	

- MAX IAS:
INITIAL : 180KT.
- PROC NOT AVBL
WHEN R246B ACTIVE.

Changes: CHART TITLE, PBN SPECIFICATION BOX.

CBPGN01-173